



**PRACTICAL ANSWERS
TO POVERTY**

Intermediate Technology Development Group

Bernd DRECHSLER

Southern Africa



Small Scale Mining & Sustainable Development

Challenge or
threat for
communities

?



Sharing

with the
community

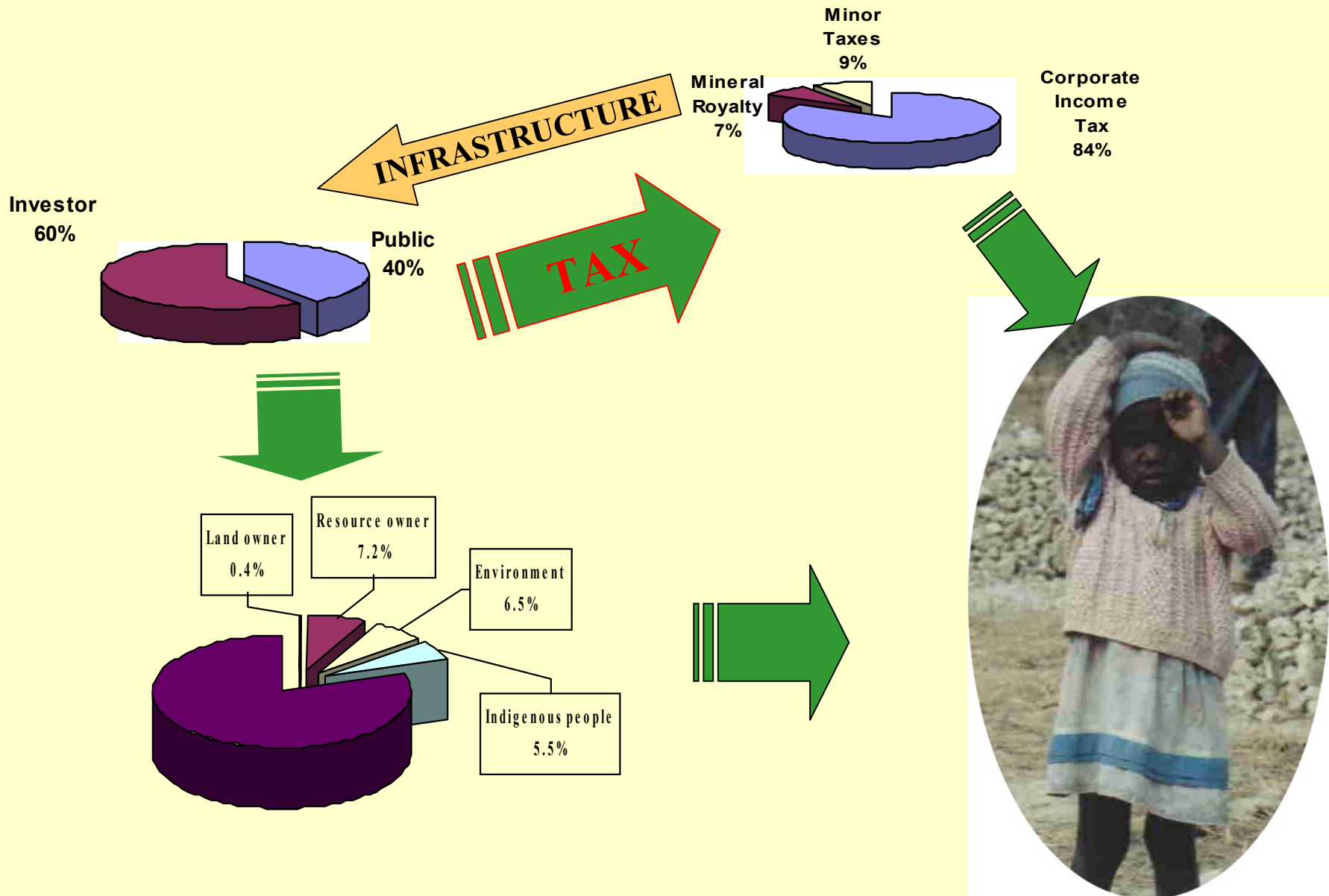
Who gets the benefits ?



Who pays the costs?

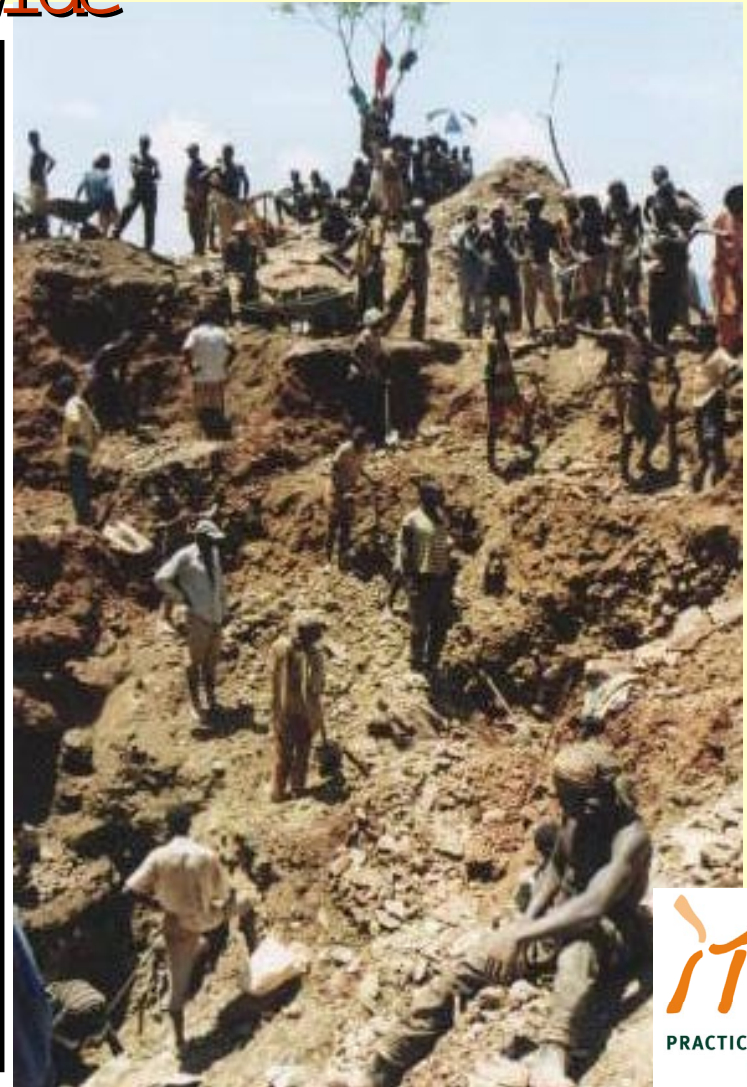
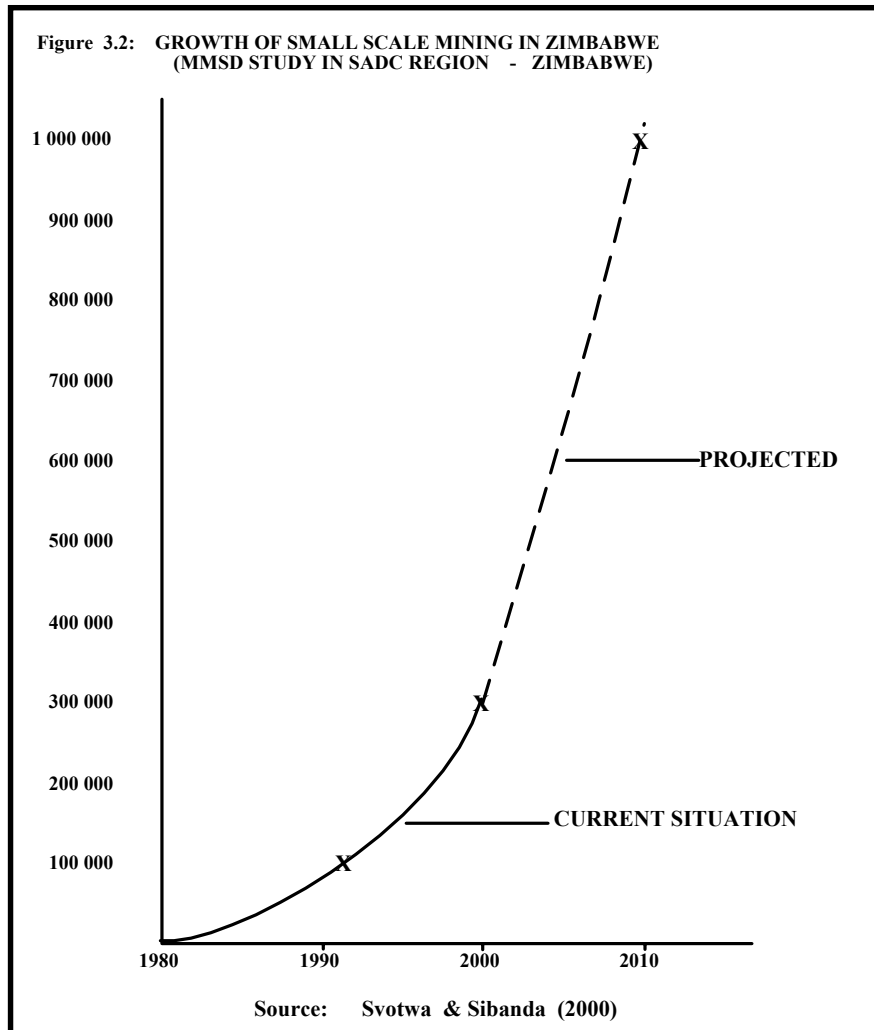


Who Gets the Share in Mining ?



Small Scale Mining ????

The Number of Small Scale Miners is increasing,
worldwide

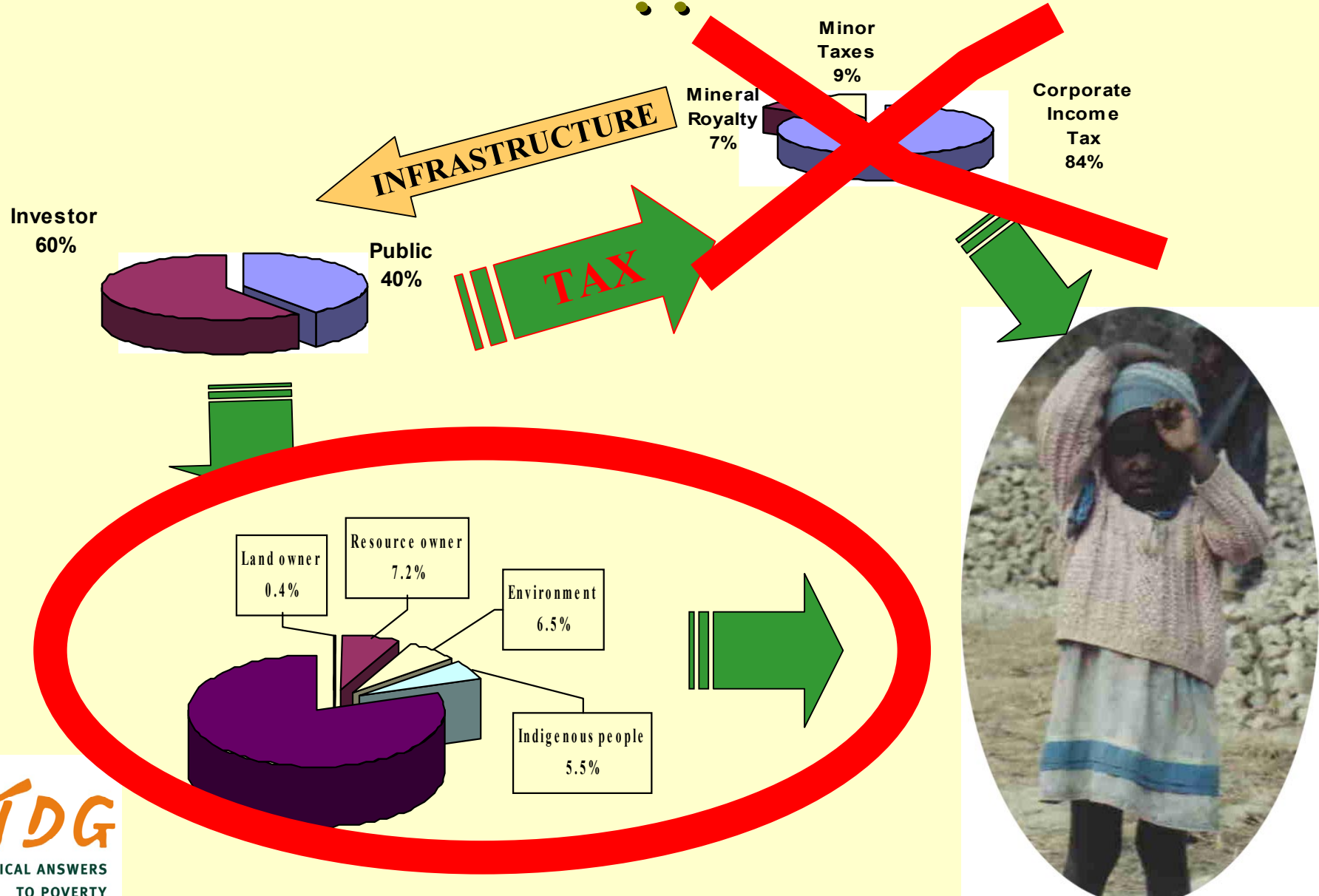


Who gets the Small Scale Mining Share ??

about 80% to 90 % of ssm activities are illegal

Who gets the Small Scale Mining Share

??



Who gets the Small Scale Mining Share??

Large Scale Mining



Small Scale Mining



**INVESTOR'S
share**



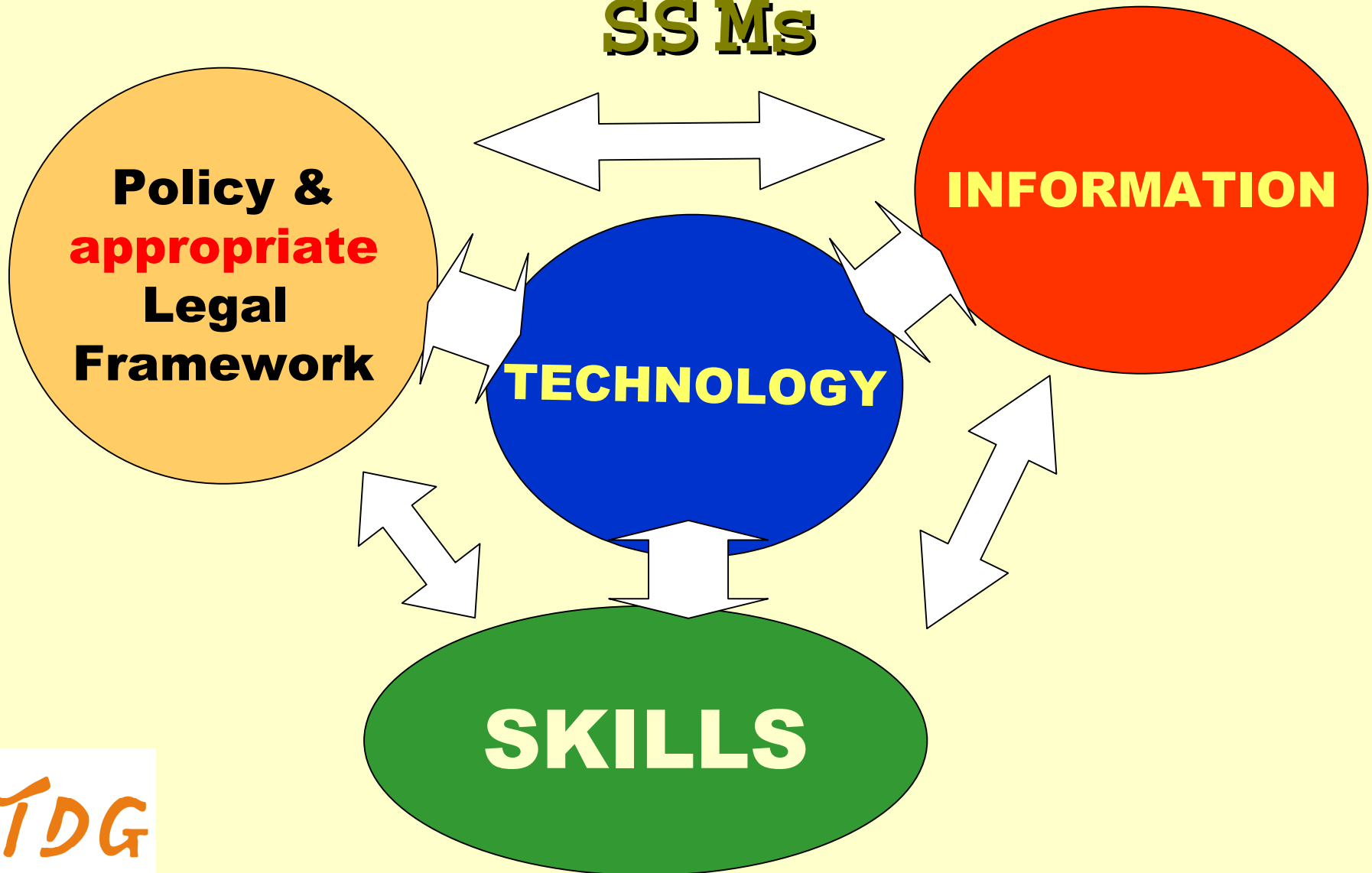
Sustainable Development for SS Ms



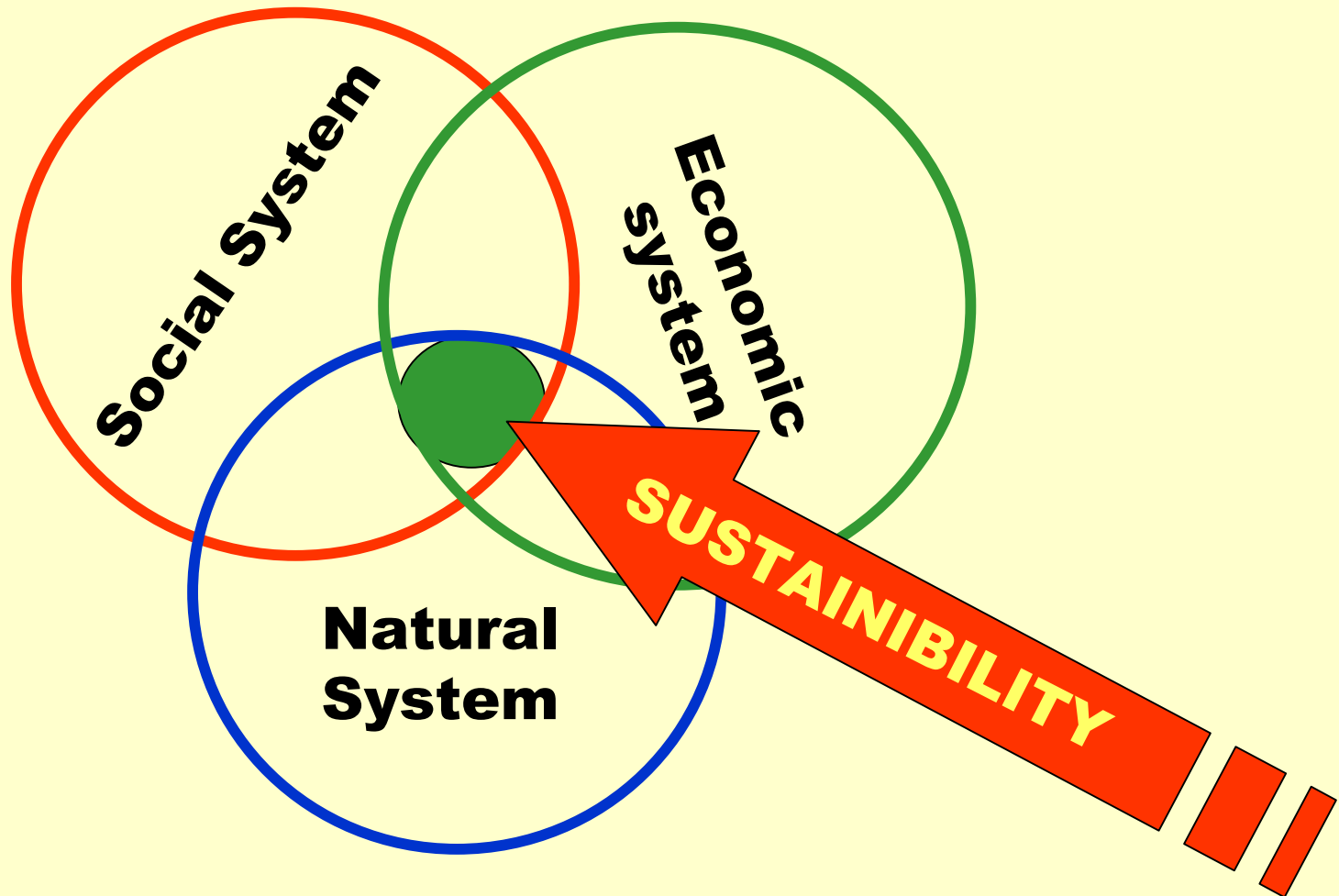
**How to
maximize the
contribution of
SS M to
sustainable
livelihoods in
rural**

Sustainable Development for

SS Ms



Sustainable Development for SS Ms



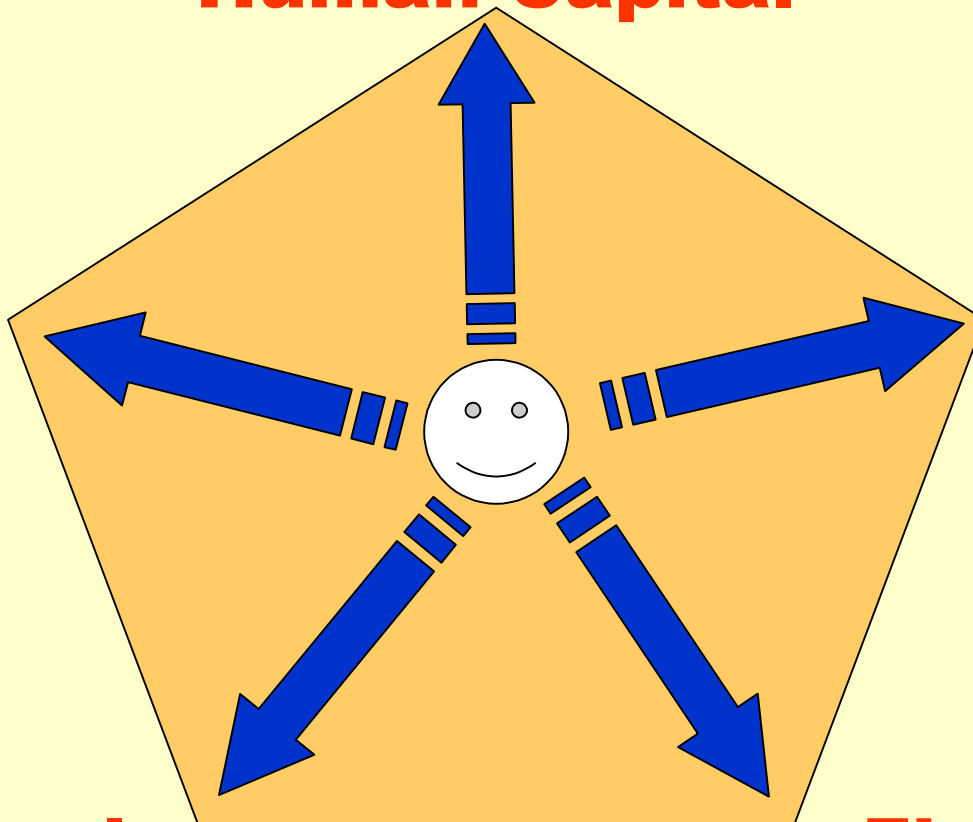
Sustainable Development for

SS Ms

Human Capital

Physical Capital

Social Capital



Natural Capital

Financial Capital

RECOMMENDATIONS

Regulations & Recognition

- ❖ **EPOs restrictions**
- ❖ **Support to transform into formal sector**
(“appropriate legality”)
- ❖ **Monitoring & Advice**
- ❖ **Macroeconomic policies –**
Exchange rate, inflation, interest rates

RECOMENDATIONS

Access to natural resources (Natural capital)

- ❖ **EPO restriction**
- ❖ **Water**
- ❖ **Land**
- ❖ **Fuel**

RECOMMENDATIONS

Access to Financial Resources (Financial Capital)

- ❖ Grants & Loans
- ❖ Interest rates
- ❖ Linkages with buyers of minerals
- ❖ Fair prices for products

RECOMMENDATIONS

Skills development

(Human capital)

- ❖ **Training programmes**
- ❖ **Attachments in large mines**
- ❖ **Exchange programmes**
- ❖ **Learning from success**

RECOMMENDATIONS

Information

(Social capital)

- ❖ **Markets (timely access to information)**
- ❖ **Mineral deposits**
- ❖ **Technology**
- ❖ **Failures & Successes**
- ❖ **Credit sources**
- ❖ **Technical partners**

RECOMMENDATIONS

Technology & technical support

(Physical capital)

- ❖ Linkages with technical partners & Large Scale Mines
- ❖ Widen technology choices
- ❖ Pricing policies for appropriate technologies

RECOMMENDATIONS

Research

(Physical & social capital)

- ❖ **Failures & Successes**
- ❖ **Environmental management**
- ❖ **Appropriate technology, development & improvement**
- ❖ **New markets for ssm products**

Large & Small Scale Mining & Government & NGOs

Together, not against each another.....



towards
prosperity
from poverty
for ALL
within the
mining
community



**PRACTICAL ANSWERS
TO POVERTY**

Thank you for your attention