

**NOVEMBER 2015**

## China-Africa Forest Governance Project News

It has been a productive few months for the project and country teams, both at home and on the international scene. Read on to catch up on news from each country. You will also find a who's who in the project. To kick us off, here are a few highlights from the past months:

- In June, we held a successful second gathering of the **China-Africa Forest Governance Learning Platform** in Cameroon – attracting nearly 100 participants, including six heads of forest departments from Africa and government-affiliated partners from China. See *Spotlight* for more.
- **Chinese timber traders** got further engaged with the project in Cameroon, Democratic Republic of Congo, Mozambique and China through face-to-face dialogue and use of a Chinese social media platform drawing attention to information on laws, policies and practices. See *Project-wide Updates* for more.
- Targeted publications from the project team: a briefing - [\*The Dragon and the Giraffe\*](#) and [\*Timber flow study: export/import discrepancy analysis between China and 4 African countries.\*](#)

But all involved with the project were very sad to hear that our colleague and friend Robinson Djeukam from Cameroon had passed away. Robinson's sharp legal mind and great warmth were with us in full force just recently in project meetings in Yaounde and Kribi. He will be missed by many.



Patrice Kamkuimo (from CED, Cameroon) discusses the impacts on forest communities living near the soon to be inaugurated Deep Sea Port in Kribi, which is set to accelerate investment and trade in the country and region (credit: Khanh Tran-Thanh, IIED)

## Spotlight

### China-Africa Forest Governance Learning Platform (FGLP) – Second learning event, Cameroon, 22-25 June 2015



Participants of the China-Africa Forest Governance Learning Platform out on the field trip in Kribi, Cameroon [credit: Khanh Tran-Thanh, IIED]

The second instalment of the FGLP learning event was held in June following from the Platform's first event run by IIED and partners in China in 2013 before this project started. We brought together 100 attendees from government, civil society, and research institutes from China, Cameroon, DRC, Uganda, Mozambique, Madagascar and Gabon and from the international community. From the conference rooms in Yaoundé to the indigenous communities in the forests of Kribi, the participants challenged each other's perspectives and built new partnerships. We discussed how we can individually and collectively improve the sustainability of

Africa's forests and land-use and how China-linked investment and trade can play a positive role. A rare multi-stakeholder forum with governments and civil society in the same room for 4 full days, the participants hailed the Platform's success in creating an open dialogue space for Chinese, African and the international community to come together. We made plans for new collaborations among African and Chinese research and civil society institutions, direct work with Chinese companies, bilateral cooperation between China and African forest departments and many more. See hyperlinks under 'Publications and Media' for exciting publications prepared for the conference. There was good attendance by the media at the event, including Xinhua.net, Journal du Cameroon and News Watch Cameroon.

We will soon follow up with a report, a photo album and a blog post summarising key highlights from the event.

Read the IIED press release about the China-Africa FGLP in Cameroon <http://www.iied.org/china-africa-forest-governance-strengthened-cameroon-event>

## Project-wide news

- **World Forestry Congress:** IIED and CAFGoP partners reported findings from the project at the World Forestry Congress in Durban, South Africa. The event also discussed effective policy, investment frameworks, guidelines and cooperation initiatives and highlighted the challenges and ways forward to improve sustainability and productivity of Chinese investments in African land use.
- **The 2<sup>nd</sup>-phase of the project:** Country teams met whilst in Cameroon to kick-off planning and budgeting for Year 2 activities. Work plans are set to be finalised by the end of November and will be available online.
- The project hosted **two workshops for NGOs in DRC and Cameroon** on how to communicate and engage with Chinese companies effectively.
- Several organisations (WRI, Chatham House, UK Timber Trade Federation, Forest Trends) have joined the stage to work on improving the legality and sustainability of Chinese timber trade, with

**new projects** supported by the UK Department for International Development (UK). We congratulate them and look forward to strong synergy between their work and this project.

## Country highlights

---

### Cameroon

- **Forum on China-Africa Cooperation – messages from Cameroon.** CED and WWF participated in group crafting governance messages for the Cameroon representatives at the next high-level intergovernmental FOCAC meeting.
- WWF-CARPO is currently finalising a MoU **with a logging company, GRACOVIR**, which exports a large amount of timber to China. They also carried out an assessment of the company's legal compliance.
- Chinese unofficial translations of Cameroon's [labour law](#) and [forestry standards](#) (*Décision n° 0108/D/MINEF/CAB du 9 février 1998 portant application des normes d'intervention en milieu forestier en République du Cameroun*) available online.

### China

- More than 60 Chinese companies trading in African timber attended the **Sustainable Timber Products Trade and Investment Summit** in Zhangjiagang in April 2015. Companies were keen to learn about the most recent CITES regulation, received Chinese translations of the Cameroon and DRC legislation and discussed how Chinese government and experts might better support them in improving sustainability. You can watch the [live video recording here](#) (in Chinese only).
- GEI led on a [study on timber flow to China from Cameroon, DRC, Mozambique and Uganda](#). The study sheds light on the China-Africa timber trade situation and is an exploration of the extent of data discrepancy between import and export data. The study urges the need to understand data discrepancy and reliability problems further. The project team aims to do so by working directly with African and Chinese customs agencies in the next phase of research.

### Democratic Republic of Congo

- Project partner Réseau Ressources Naturelles has been collecting data to include an upcoming comprehensive report on the **state of Chinese investment in the forest sector in DRC** and one on **Chinese investments in non-Forestry sectors**, drawing from its work in five provinces. The data will also enrich the project's country diagnostic study.
- WWF are in the process of finalising a **timber flow study and a legal analysis study**, the former seeks to increase the understanding of the discrepancies identified in the formal trade between China and DRC, whilst the legal analysis will shed light on the gaps in the legal framework concerning Chinese investments in DRC's natural resources sectors.
- Chinese unofficial translations of DRC's [Forestry law](#), Labour law (not online, but available upon request – please contact [khanh@iied.org](mailto:khanh@iied.org)) and [Investment law](#) and the new [decree on forest management](#) (*Arrêté Ministériel 50/CAB/MIN/EDD/01/03/BLN/2015 du 25/09/2015 Relatif à l'Exploitation Forestière du Bois D'Oeuvre*) available online.



## Mozambique

- Project teams in Mozambique and China have been supporting the development of a Memorandum of Understanding for **China–Mozambique cooperation in the forest sector**.
- **A Mozambique-specific operation guideline for Chinese forestry enterprises** is currently being drafted. Chinese researchers from the Research Institute of Forestry Policy and Information (RIFPI) visited stakeholders in Maputo in April 2015 and have been working with partner TerraFirma to develop this. We aim to publish this by the end of this year.
- **24 incentives for logging companies for more sustainable practice** have been analysed with a view to identifying and realising the most promising ones. Report to be available soon.



A Chinese worker at the timber depot of Green Timber, a Chinese-owned timber concession that is licensed to operate in Nampula and Zambezia provinces. Green Timber has a concession area in excess to 200,000 hectares [Photo credit: Mike Goldwater]

## Uganda

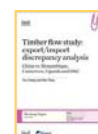
- Government in Uganda requested the project team to **convene an inter-agency forum on Chinese investment trends in forest and land use sectors**. This request for a policy dialogue forum came from consultations with the Forest Sector Support Department and the National Forestry Authority. The next step is to aim to engage Chinese stakeholders in this forum.


## Company engagement

- **Dialogue with Chinese companies and traders in DRC and Cameroon is ongoing on social media**. The project has developed a network on a Chinese social media platform to try and build an active community of these business users – the platforms to date attract about 86 (DRC) and 107 (Cameroon) Chinese-speaking users, about a third of whom are local traders. Timely information on new timber regulations, timber market trends, and training workshops is posted online. These platforms show great promise. In the 2<sup>nd</sup> year, the project team aims to build on the virtual presence and bring the Chinese traders together in a physical space to discuss legality and sustainability issues.

## Publications and briefings

- [The dragon and the giraffe: China in African forests](#) (James Mayers, 2015) . This briefing provides an overview of how the China–Africa Forest Governance project is engaging with Chinese investors and enterprises to tackle key problems in the illegal timber trade and seize opportunities for more sustainable Chinese investment in land-use sectors (Also available in [French](#) and [Chinese](#)).
- [Recognising informality in the China–Africa natural resource trade](#) (Xiaoxue Weng, 2015). This backgrounder gives an overview of how understanding informal small-scale trade and investment can promote pro-poor and sustainable resource governance.
- [Timber flow study: export/import discrepancy analysis China vs. Mozambique, Cameroon, Uganda and DRC](#) (You Chang and Ren Peng, 2015). This study provides an in-depth analysis of the most recent data for the timber trade between China and four African countries, in an effort to understand the basic situation, explore the extent of data discrepancy and the developing trends.



- The [Guide to investing in locally controlled forestry](#) (Dominic Elson, 2012) is a tool for practical action – providing guidance on how to structure enabling investments and prepare the ground for asset investments that yield acceptable returns and reduced risk, not only for investors, but also for local forest right-holders, national governments and society at large. It has now just been translated and published in [Chinese](#). 
- **Country briefings** -The following 2-page briefings are a summary of a longer country diagnostic report on China-Africa forest governance issues.
  - Cameroon [English](#), [Chinese](#), [French](#)
  - China [English](#), [Chinese](#), [French](#)
  - Democratic Republic of Congo [English](#), [Chinese](#), [French](#)
  - Mozambique [English](#), [Chinese](#), [French](#)
  - Uganda [English](#)
- **Chinese translations of Cameroon and DRC legislation:** Cameroon's [Labour Law](#) and [Forestry Standards](#) (*Décision n° 0108/D/MINEF/CAB du 1998*); DRC's [Forestry Law](#), Labour Law (not online, but available on request, please email [khanh@iied.org](mailto:khanh@iied.org)) and Investment Law and the [new decree on forest management](#) (50/CAB/MIN/EDD/01/03/BLN/2015).

## Project partner profiles

### IIED Project team

The IIED staff profiles and pictures were listed in the previous project update – you can find more information on us on the project page <http://www.iied.org/china-africa-forest-governance-project> and our profiles on the IIED website <http://www.iied.org/people>.

### CAMEROON

**Centre pour l'Environnement et le Developpement** <http://www.cedcameroun.org/>

The CED is a right-oriented NGO with substantial prior partnership with IIED through the Forest Governance Learning Group. As well as being well-integrated with stakeholders in the project, CED brings a solid track record in research, governance influence and project management. **The lead contact for the project is Mr Patrice Kamkuimo, Forest Governance Expert at CED.**



**Mr Samuel Nguiffo**, Secretary General of CED and the lead contact for the organization with regards to the project.



**Mr Patrice Kamkuimo**, Forest Governance Expert. He is the China-Africa Forest Governance project lead and the key focal point for the project in Cameroon.



**Ms Mireille Tchiako**, She is in charge of communication and public relations regarding the project.



**Ms Henriette Chedjou**, She is in charge of logistics and financial aspects for the project.

### CHINA

**Research Institute of Forestry Policy and Information (RIFPI), Chinese Academy of Forestry (CAF)** <http://en.caf.ac.cn/>

The RIFPI is a government linked research centre which provides information and research support to policymakers regarding global forestry products trade and investment. RIFPI brings extensive knowledge of China's trade and investment practices abroad in the forestry sector as well as China's domestic policy system; provides research support to the Chinese government on promoting sustainable forestry product trade and investment. CAF is a government research body affiliated with the State Forestry Administration (SFA), and along with SFA is the gate keeper on matters pertaining to forestry, including on international matters. CAF has been a key partner for this project, and has added its institutional weight to trainings and meetings with Chinese enterprises operating in Africa. **The lead contact for the project Dr Chen Yong, Associate Professor at CAF.**



**Dr Chen Shaozhi**, Director. Dr Chen Shaozhi provides overall leadership for the project and offers critical inputs across the three project outputs.



**Dr Chen Yong**, Associate Professor. Dr Chen Yong is overall project manager. His input will include producing Mozambique-specific guidelines promoting sustainable and legal trade and investment.



**Dr Xu Bin**, Associate Professor. Dr Xu Bin is responsible for stakeholder engagement in China, working with Chinese enterprises to understand their needs and building their capacities



**Dr Li Jianquan**, Associate Professor. Dr Li Jianquan is responsible for mapping relevant China-Africa actors, literature and policy processes in forestry and other land-use sectors.

**Global Environmental Institute** <http://www.geichina.org>

GEI is one of China's most important and influential environmental NGOs, with a long history of working on forestry and governance issues. GEI's strong relationships with Chinese government ministries and research institutes, reputation for delivery of quality outputs, combined with its other international projects in the forestry sector make it an ideal partner for this project. **The lead contact for the project is Ren Peng, Program Coordinator at GEI.**



**Ms Jin Jiaman**, Executive Director. Ms. Jin is responsible for development, administration, design & management of GEI's programs. She provides overall leadership for the project.



**Mr. Ren Peng**, Program Coordinator. Ren Peng works on environmental, social and corporate governance, and on China's outward foreign direct investment. Mr. Ren is focal point at GEI for the project.

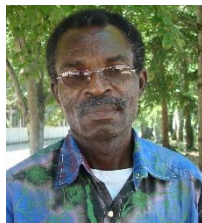


**Ms. Ji Lin**, Program officer and assistant to the Executive Director. Ms Lin works on environmental and social aspects of Chinese overseas investment. Lin will provide general support to the project

**DEMOCRATIC REPUBLIC OF CONGO**

**Réseau Ressources Naturelles**

The RRN is network-based NGO promoting good governance in natural resources management and recognition of local communities and indigenous peoples' rights in the DRC. RRN's particular strength is its strong and far reaching network of members consisting of 256 environmental and human rights civil society organisations present in the 11 provinces in DRC. It also maintains strong relationships with government agencies and the private sector. **The lead contact for the project is Mr Jean-Marie Nkanda.**



**Mr Joseph Bobia Bonkaw**, National Coordinator. Joseph provides overall leadership for the project and in particular, the political advocacy aspects.



**Mr Jean-Marie Nkanda**, Project Officer. Jean-Marie oversees the implementation of the project and provides overall technical guidance. He is the focal point of the project



**Mr Barthélemy Boika**, Technical Assistant. Mr Boika provides expertise in participatory mapping of Chinese

investment sites in the forestry sector in DRC



**Mr Antoine Mingashanga**, Technical Assistant. Antoine's expertise is impact of mining on local

communities and natural resource governance.



**Mr Jerry Bongo**, Administrative Secretary. Jerry provides administrative support for the

project



## MOZAMBIQUE

### Terra Firma

Terra Firma is a well-established consultancy organisation specialising in land and natural resource management in Mozambique and the rest of Africa. **Ms Maria Muianga is key contact for the project.**



**Mr Simon Norfolk**, Executive Director. Simon provides overall leadership of the project.



**Mr Paul de Wit**, Senior Associate. Paul offers critical inputs across the project.



**Ms Maria Muianga**, Senior Researcher. Maria is responsible for research, and is focal point for the project in Mozambique.



**Mr Carlos Serra**, Senior Associate. Carlos is responsible for the legal framework research component and gives general support to the project.

## UGANDA

### Advocates Coalition for Development and Environment (ACODE) <http://www.acode-u.org/>

ACODE is a leading law-oriented NGO based in Uganda with policy research and advocacy as its core business. ACODE is also long-standing partner of IIED's through the Forest Governance Learning Group and well-placed to steer the work. **The key contact for the project is Mr Godber Tumushabe** who is the former Executive Director of ACODE



**Mr Godber Tumushabe** is the Associate Director of Great Lakes Institute for Strategic Studies. Godber provide leadership and will be the key focal point for the project.



**Dr. Arthur Bainomugisha**, Executive Director. Arthur provides critical inputs across the three project outputs.



**Mr Onesmus Mugenyi** Deputy Executive Director. Onesmus is a Public Policy Analyst. He provides critical input to the project.



**Ms Julian Barungi**, Researcher. Julian works under the ACODE programme of Trade, Innovations and Biotechnology Policy. She is the lead researcher on the project.



## WWF team

WWF is key partner in this project bringing much experience in developing capacity for improved timber trade legality, sustainability and forest-linked investment between China and Africa. It has trained more than 5,600 people on timber trade legality in China and SE Asia and has strong representation in the African countries in this project to extend this capacity-building approach with company representatives (forest to exporter), government officials, local auditors, industry association representatives and other NGO representatives.



**Ms Hisayo Fujikawa Harlan**, Head of Operations & Communications, WWF International. Hisayo provides overall project management oversight.



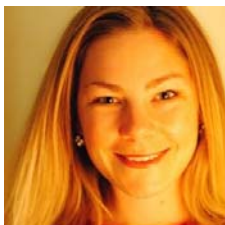
**Mr Angel Llaveró**, Forest Products Market and Supply Chain Coordinator, WWF International. Angel provides relevant technical support to China, manages TRAFFIC work and leads legality framework activities



**Mr Gijs Breukink**, Responsible Forestry Coordinator, WWF International. Gijs provides relevant technical support to mainly Congo Basin and CEA.



**Ms Celine Beaulieu**, Public Sector Partnerships Manager, WWF International. Celine provides advice on DFID expectations and general PSP related contractual aspects.



**Sylvie Zaplata**, Project Finance Analyst, WWF International. Sylvie is responsible for IIED-WWF contractual arrangements and financial reporting.



**Mr Hin Keong Chen**, Forest Trade Programme Leader at TRAFFIC. Chen leads the development/update of national legality framework.



**Mr Denis Mahonghol**, Forest Trade Programme Officer, TRAFFIC. Denis supports the development of national legality framework and capacity building materials.



**Ms Christine Tam**, Regional Trade and Investment Coordinator, WWF Coastal East Africa. Christine supports overall coordination between WWF Moz, CEA, China, and International as well as implementation on the ground.



**Mr Norbert Sonne**, Forest Programme Coordinator, WWF Central Africa Regional Programme Office (CARPO). Norbert coordinates implementation of the WWF component of activities in Cameroon.



**Ms. Ngo Ndjock Adeline Chantal**, Executive Assistant, WWF CARPO. Adeline provides administrative services.



**Mr Georges Belmond Tchoumba**, Central Africa Regional Forest Programme Coordinator, WWF CARPO. Belmond is in charge of overall coordination and implementation of this project in Cameroon and DRC.



**Mr Inoussa Njumboket**, Technical assistant, WWF DRC. Inoussa is the technical assistant to the forest program in DRC and for this project he will be the main project officer



**Rito Mabunda**, Forest Officer, WWF Mozambique. Rito is in charge of the China-Africa forestry work on the ground.



**Mr Huang Wenbin**, Manager of the forest programme, WWF China Programme Office. Mr Wenbin will provide oversight for the project



**Ms Wang Lei**, Senior Programme Officer of the forest programme, WWF CPO. Ms Lei is the focal point at WWF CPO and responsible for overall project implementation

In addition, Serge Mbelo, Chantal Bob and Fifi Kabwiku, from the WWF DRC office, provide logistical, administrative and financial management support.



This research was funded by UK aid from the UK Government, however the views expressed do not necessarily reflect the views of the UK Government.