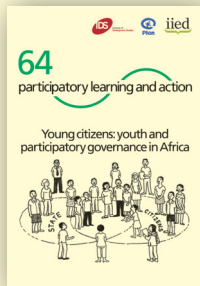


Launch invitation



Launch invitation Young citizens: youth and participatory governance in Africa

Guest editors: Rosemary McGee and Jessica Greenhalf

IIED's *PLA* series co-editors, Plan UK and the Institute of Development Studies (IDS) invite you to the launch of the latest issue of *Participatory Learning and Action* (issue 64).

When: Tuesday 13th December 2011, 3.00pm – 6.00pm (lunch from 2.00pm)

Where: International Institute for Environment and Development (IIED), 80-86 Gray's Inn Road, London WC1X 8NH, UK

Download free online: <http://pubs.iied.org/14607IIED.html>

All over the world citizens are starting to demand accountability from those in power. We are seeing exciting experiments in participatory governance. But are they working for young people? What spaces are most promising for the participation of children and young people in governance?

Young Africans make up more than half of the continent's population. Across Africa youth (particularly boys and young men) are often seen as a 'lost generation' – frustrated, excluded and marginalised from decision-making processes.

But this latest issue of *Participatory Learning and Action* demonstrates how this is changing.

This special issue, developed and written by and with young people, reflects on these questions and challenges through a series of case studies of young people's engagement in participatory governance. The articles were developed during a week-long writeshop in Nairobi, Kenya in March 2011 co-hosted by IIED, Plan UK and IDS. At least three participants were young people and many more were involved in the earlier writing stages. They demonstrate the persistence, passion and enthusiasm that young people bring to governance processes – and how they are driving change in creative and unexpected ways.

Speakers include guest editors Rosemary McGee and Jessica Greenhalf. There will also be a discussion via Skype video link-up with two of our authors in Nairobi, Edwine Ochieng, a government officer and Cynthia Ochola Anyango, a member of a youth organisation.

We look forward to welcoming you to the launch and to IIED's new offices.

RSVP: Holly Ashley

Email: holly.ashley@iied.org

About the guest editors Rosemary McGee is a research fellow in the Participation, Power and Social Change Team at the Institute of Development Studies (IDS), University of Sussex, UK. Jessica Greenhalf is a former member of Plan UK's governance team and now works with Restless Development Uganda, a youth-led development NGO.

About *Participatory Learning and Action*

Participatory Learning and Action (PLA) is the world's leading journal on participatory approaches. *PLA* is aimed at practitioners, researchers, academics and activists. All articles are peer-reviewed by an international editorial board. *PLA* is published twice a year and is a vital resource for those working to enhance the participation of ordinary people in local, regional, national and international decision-making, in both South and North.

