

REDD and Community

Noell Kempff Carbon Project, BOLIVIA
Berau District, INDONESIA
Adelbert Mountains, PAPUA NEW GUINEA

REDD demonstration project partnerships that
address community participation and benefits

JAMES HARDCASTLE, The Nature Conservancy

jhardcastle@tnc.org

13th January, 2010

LAM DONG PROVINCE, VIET NAM

REDD Demonstration

REDD demonstration project development:

- Participatory design and implementation
- ‘No-regrets’, meets long-term development criteria
- Performance-based, **emissions are reduced**

- Incentives for community engagement:

Communities:

- understand REDD; their roles and responsibilities
- are supported by robust legal and institutional frameworks
- manage & control access and use of local forest resources
- assist monitoring/reporting on carbon stocks
- receive equitable benefits
- Perceive a direct link from REDD to livelihoods & local development

Noel Kempff, Bolivia

- 30-year project 1996-2026
 - 832,000 ha of 'avoided deforestation'
 - 1997 to 2005, avoided 1,034,107 t of CO₂
 - 3rd Party verified emissions reduction (VER)
 - avoided c. 5,838,813 t of CO₂ by 2026
-
- Project cost \$12,000,000 (TNC 25%)
 - Project investors (private, Govt) to share revenues from VER sales every 5 years (51%-49%)
 - Endowment fund for PA management / monitoring

Noel Kempff, Bolivia

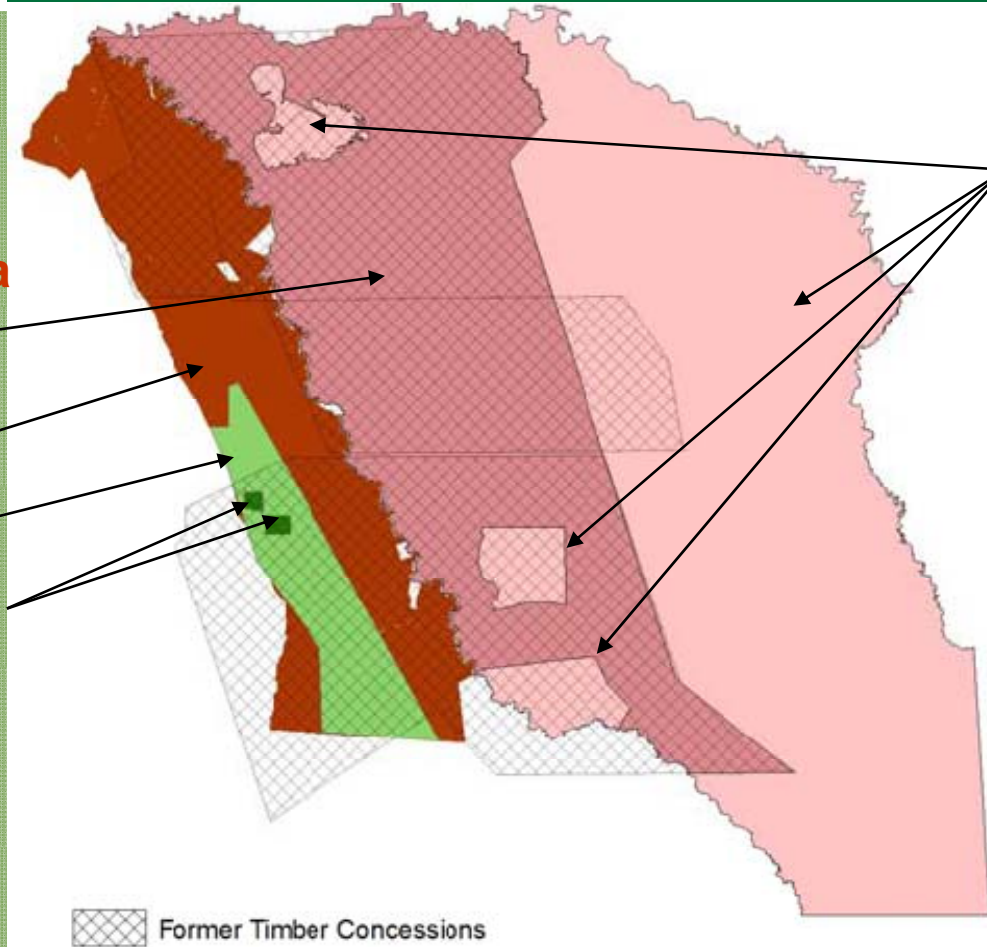
**Carbon project area
(832,000ha)**

Added to PA

Ancestral territory

Community logging

Active logging 97-05



Existing Pas
(1,050,000 ha)

Noel Kempff - Communities

- Endowment trust fund
- Community land rights
- Community forestry program
- Ecotourism opportunities
- Development initiatives, housing, health

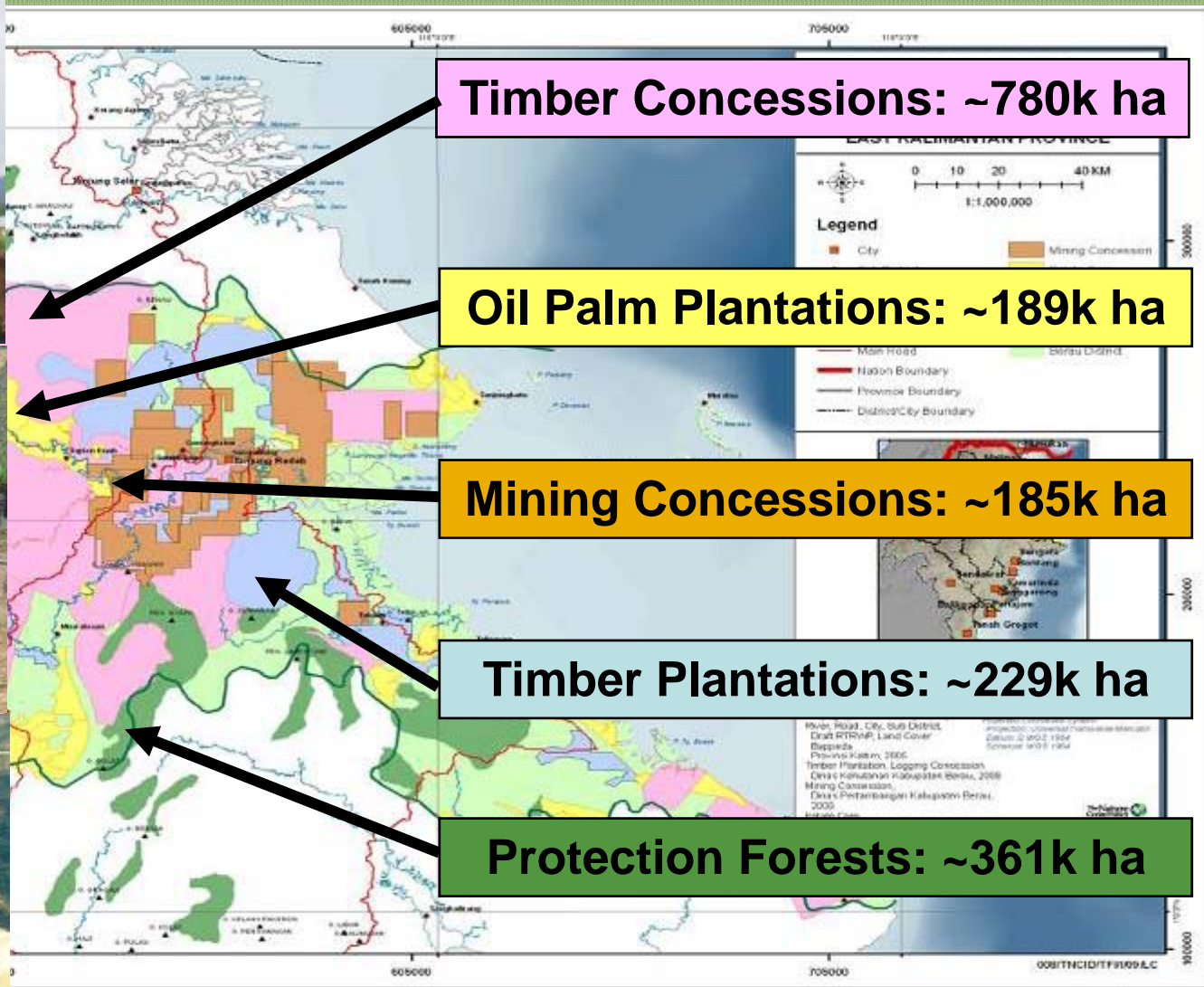
Further progress will address:

- High community expectations
- Governance, access and equity issues
- Clarify % of Govt CO² revenue for community

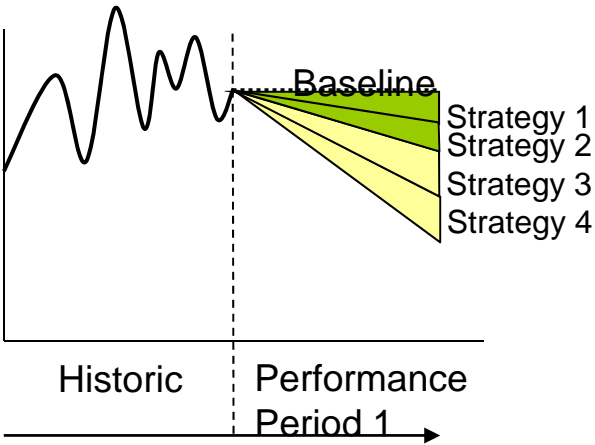
Berau, Indonesia



Land use in Berau



Berau District REDD

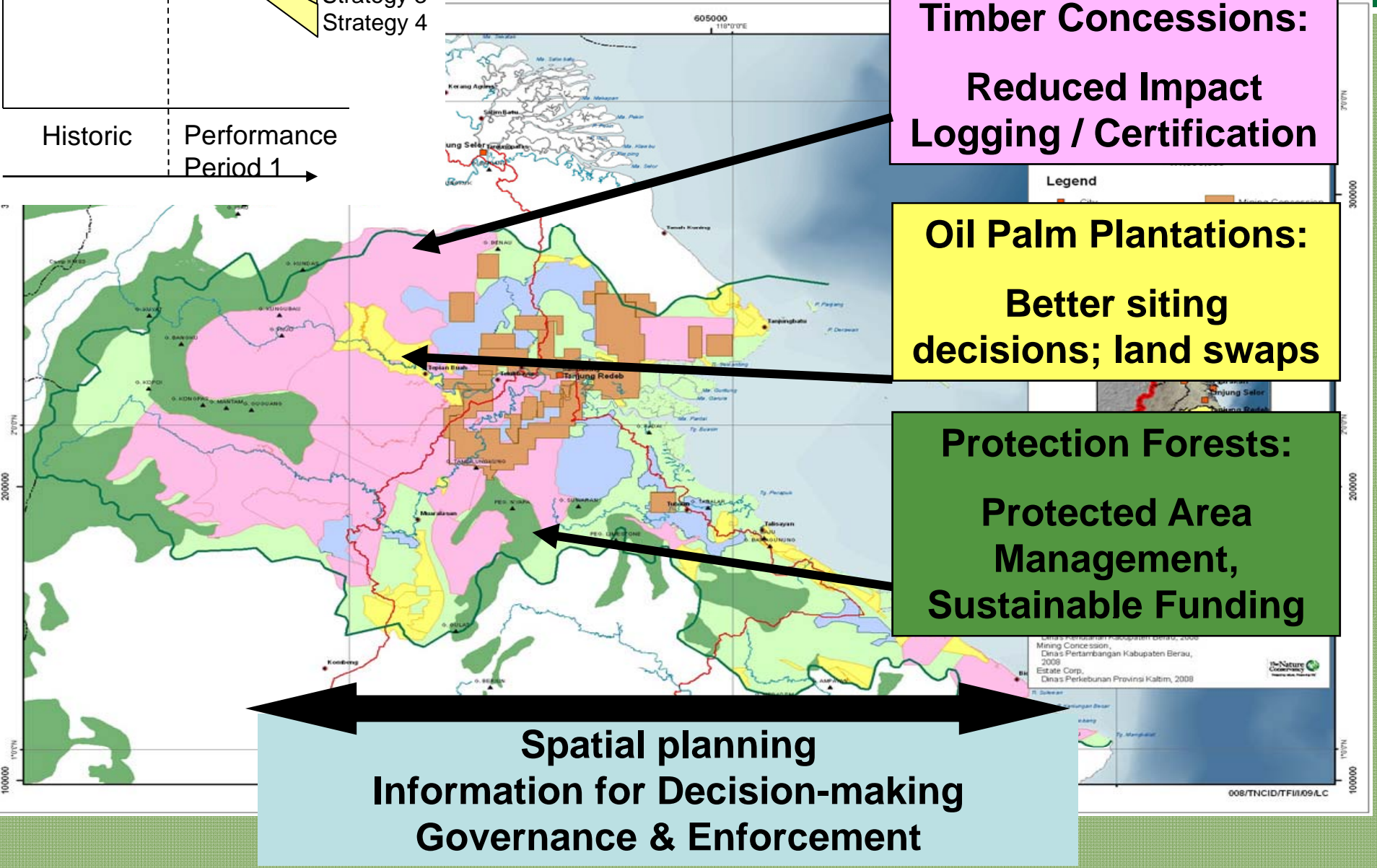


**Timber Concessions:
Reduced Impact
Logging / Certification**

**Oil Palm Plantations:
Better siting
decisions; land swaps**

**Protection Forests:
Protected Area
Management,
Sustainable Funding**

**Spatial planning
Information for Decision-making
Governance & Enforcement**



Berau - Communities

- Berau in initial stages, one of 4 Govt. pilots
- Project Management Unit to be established
 - must include community representation
 - must include social safeguards
- TNC and NorAD /USAID, to identify the role of community in each REDD strategy in Berau
 - community engagement and understanding
 - RAFT project REDD orientation in SEA, inc. VN (RECOFT)
 - community forestry and conserved areas
 - conflict resolution and land allocation
 - benefit sharing and delivery mechanisms

Papua New Guinea (PNG)

- Government framework still in development
- Legal ownership of carbon still unclear
- Community customary land tenure - 90% of country
- Weak regulatory and governance institutions

- Deforestation rates inside PA's as high as outside
- Logging and plantation conversion key emissions
- Community encroachment also a major CO₂ source
- 'Carbon Cowboys' and raised expectations
- Poverty; migration, population growth, food security

PNG - Communities

Madang Province (TNC, ITTO, partners)

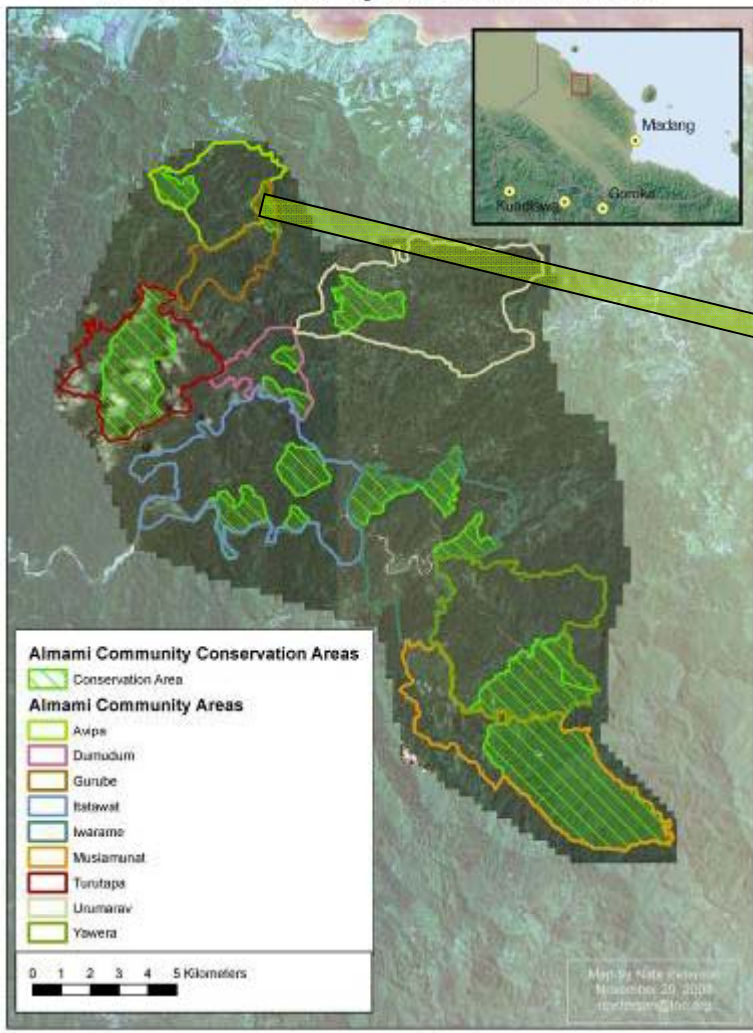
- Adelbert Mountains – 21 communities
- community land-use and forest plans
- local Govt regulations / institutions
- cooperative, Fair Trade and FSC
- local financial mechanisms
- Provincial planning and policy (Madang, Manus, East Sepik)

With AusAID and Mama Graun Trust Fund

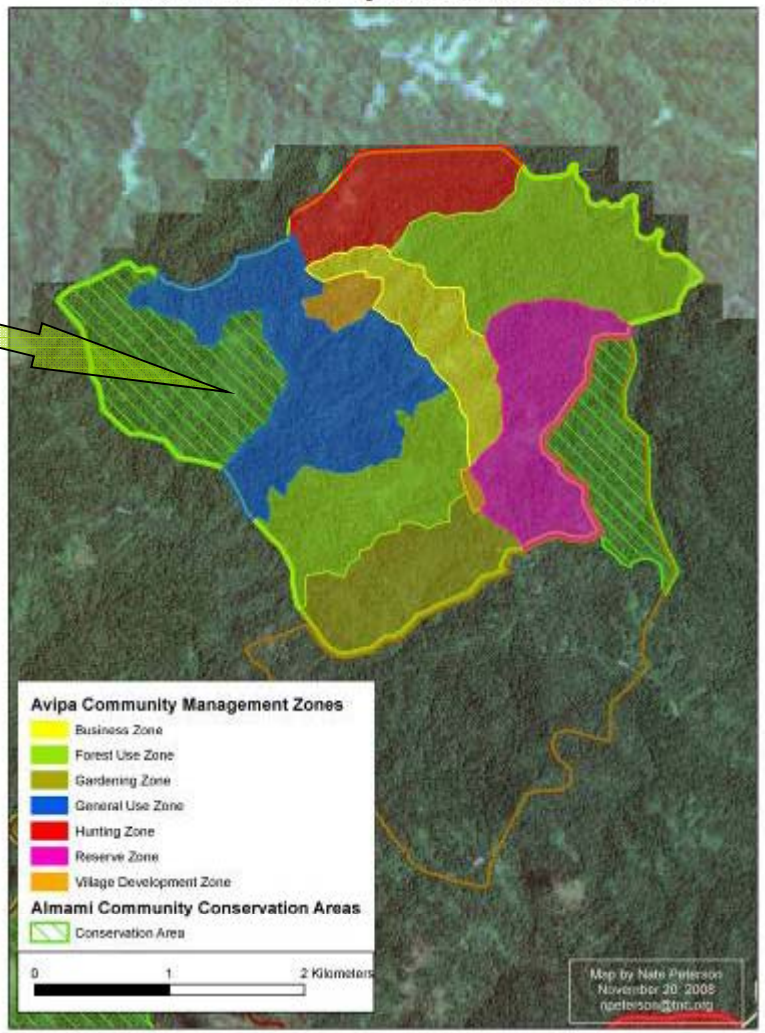
- Portfolio of customary land-use agreements, benefit-sharing mechanisms and legal frameworks
- identifying appropriate and equitable incentives
- Reporting to National Government and stakeholders

Adelbert Mountains, PNG

Almami Community Conservation Areas



Almami Community Conservation Areas



Conclusion

REDD - avoid emissions through alternative land-use strategies

Large gains in improved planning for extractive industries (mining, plantation, forestry)

Pilots/demonstrations must be viable over the long-term (ie no future REDD)

Communities in each case need to:

- be better informed of REDD and roles and responsibilities (expectations)
- be further involved in planning & decision-making, project management
- implement a component of REDD (ie community forestry, community conserved areas) to contribute to avoided emissions
- receive incentives that encourage their participation
- receive equitable benefits from REDD programs

Bottom-up community engagement and mobilization (Adelberts)

Top-down coordination and management of REDD opportunities at significant scale (Berau)

Questions?

