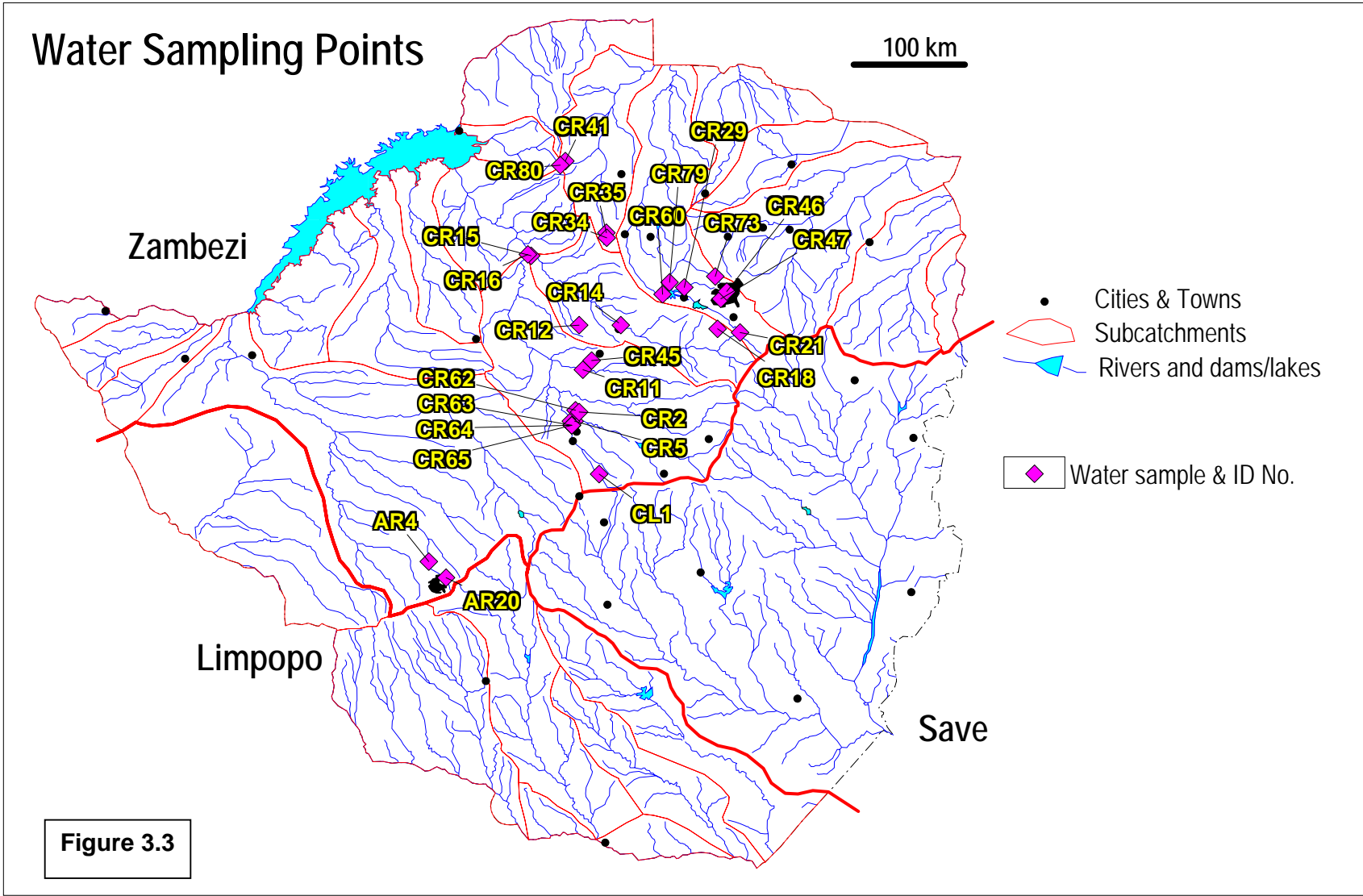


**Figure 3.2:** Map of Zimbabwe, showing hydrological zones, major rivers and positions of Zambezi and Limpopo sub-catchments.



**Figure 3.3:** Map of Zimbabwe, showing positions and numbering of water quality sampling sites operated by ZINWA.

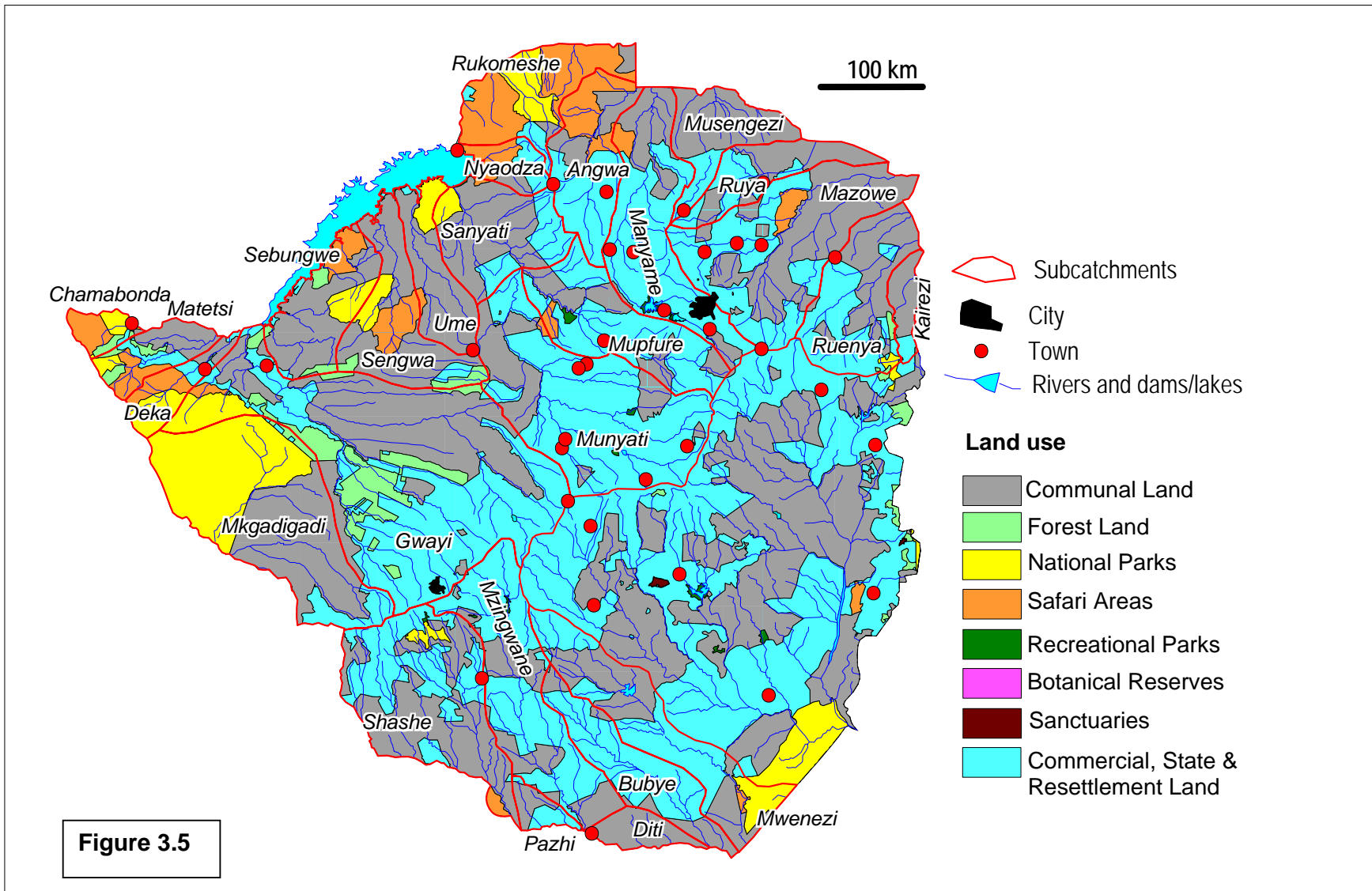
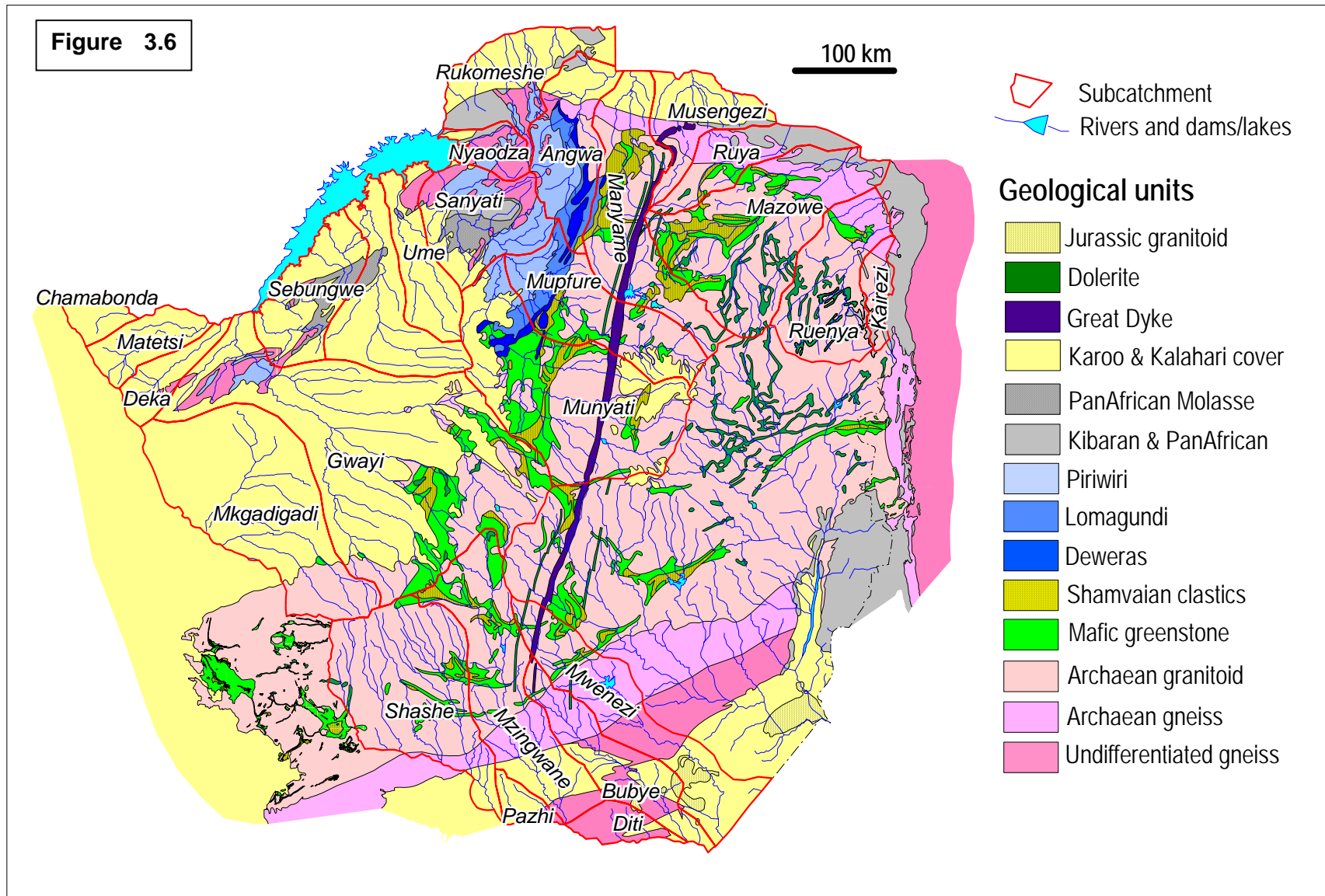


Figure 3.5: Map of Zimbabwe, showing distribution of different land use types.



**Figure 3.6:** Map of Zimbabwe, showing distribution and extent of different geological units.