



**PRACTICAL ANSWERS
TO POVERTY**

Intermediate Technology Development Group

Bernd DRECHSLER

Southern Africa



**Why working with
small-scale miners
??????????**

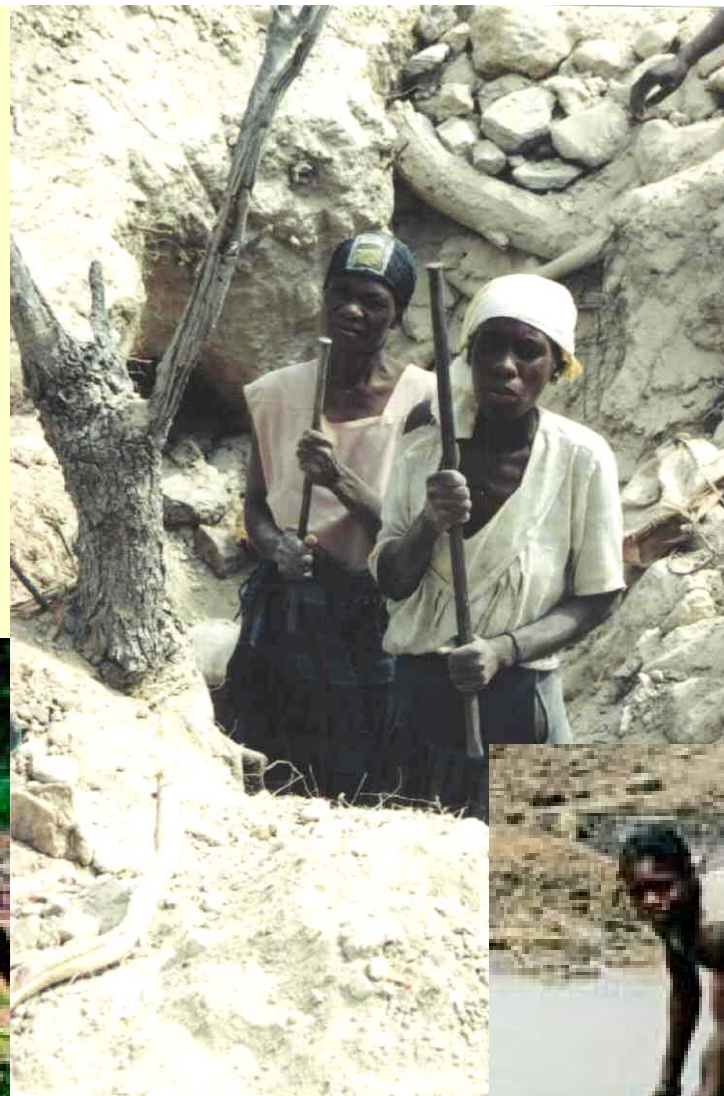


**Sustainable
Development
depends on**

Sharing

**with the
community**

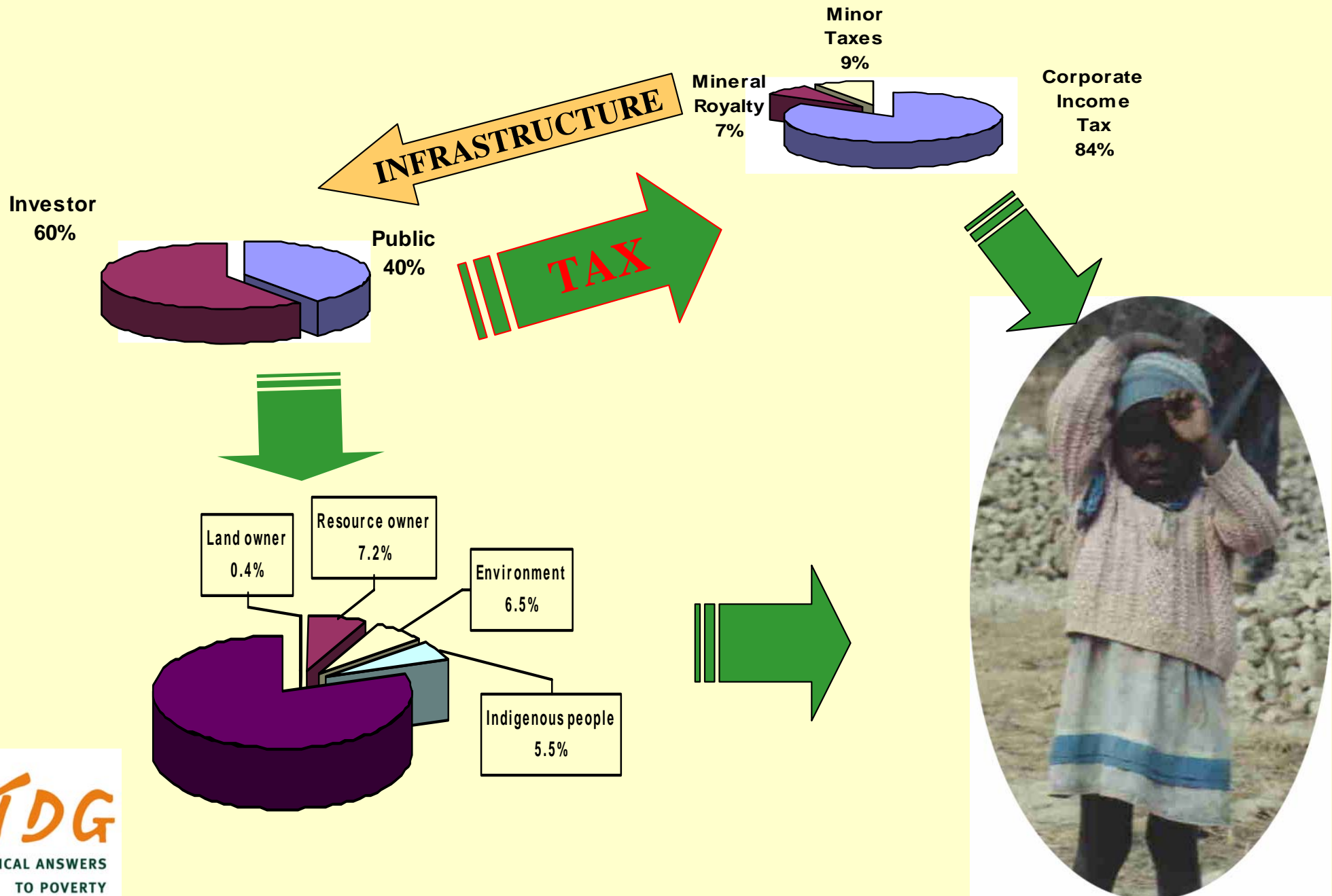
Who pays the costs ?



Who gets the benefits ?



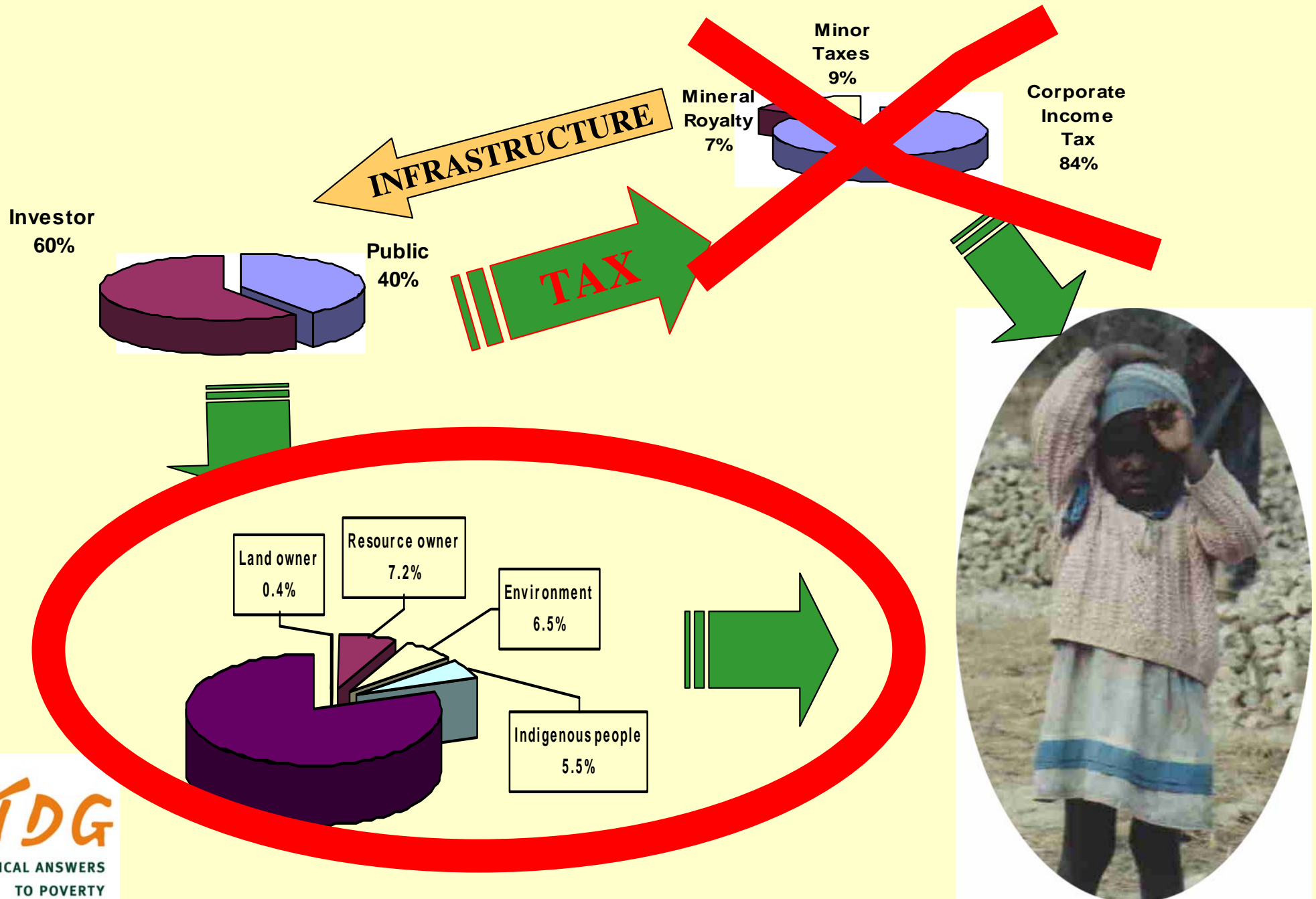
Who Gets the Share in Mining ?



Who gets the Small Scale Mining Share ??

about 80% to 90 % of ssm activities are illegal

Who gets the Small Scale Mining Share ??



Who gets the Small Scale Mining Share ??

Large Scale Mining



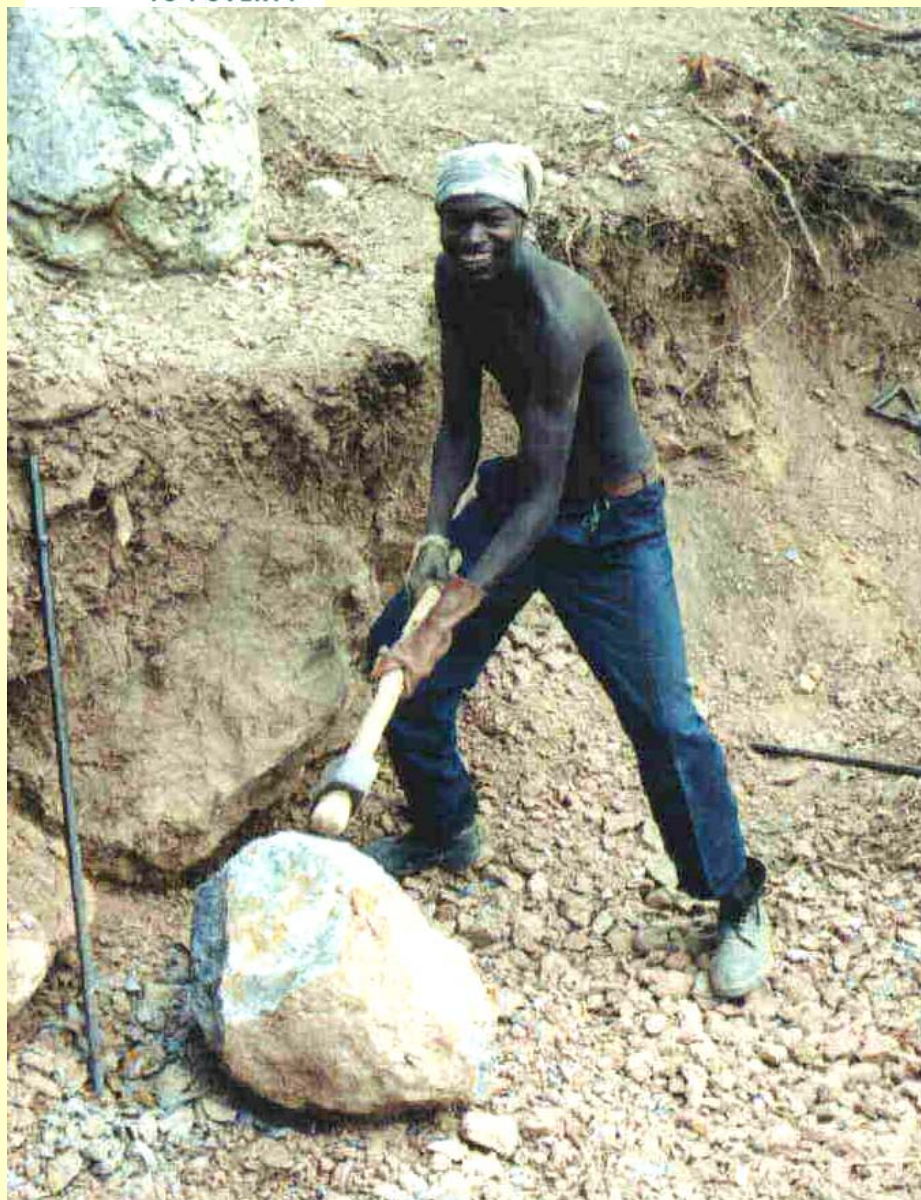
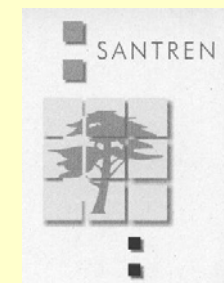
Small Scale Mining



INVESTOR'S
share



Malawi



Area:	118,480 km²
Population :	10,4 mil.
GDP/head/y:	US\$ 132
Mining Contribution:	0,9 %
Formal Mining	
Employment:	14,000
SS-Miners:	40,000
• of these informal:	90 %
• of these women:	10 %

Malawi



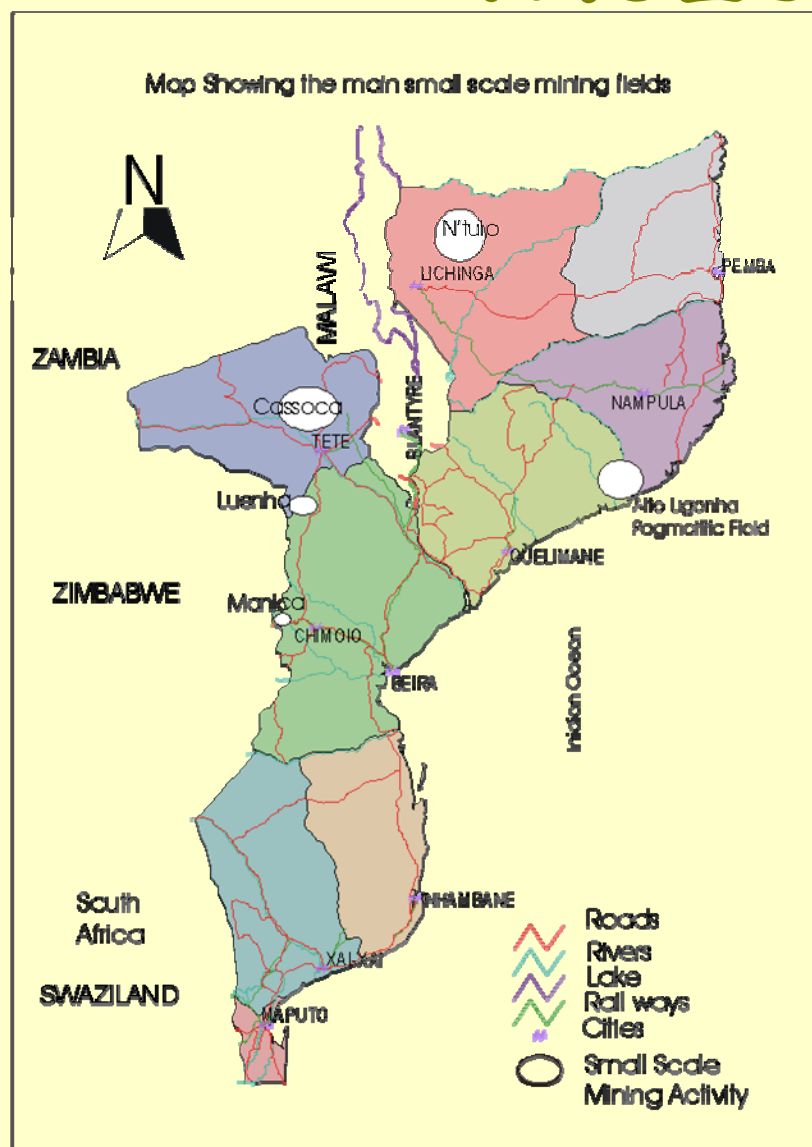
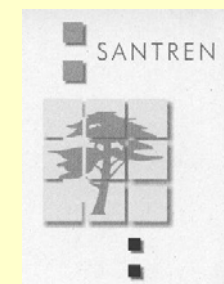
Main Minerals:

- ✿ **LIMESTONE**
- ✿ **BUILDING MATERIALS**
- ✿ **GEMSTONES**

Also mined:

- **Salt**
- **Sand**
- **Gold**
- **Talc**
- **Coal**

Mozambique



Area:	801590 km ²
Population :	19.1 mil.
GDP/head/y:	US\$ 92
Mining Contribution:	2.0 %
Formal Mining	
Employment:	87,000
SS-Miners:	60,000
• of these informal:	95 %
• of these women:	30 %

Mozambique



Main Minerals:

- ✳ **GOLD**
- ✳ **DIAMONDS**
- ✳ **GEMSTONES**

Also mined:

- **Limestone**
- **Sand**
- **Gypsum**
- **Talc**

Tanzania



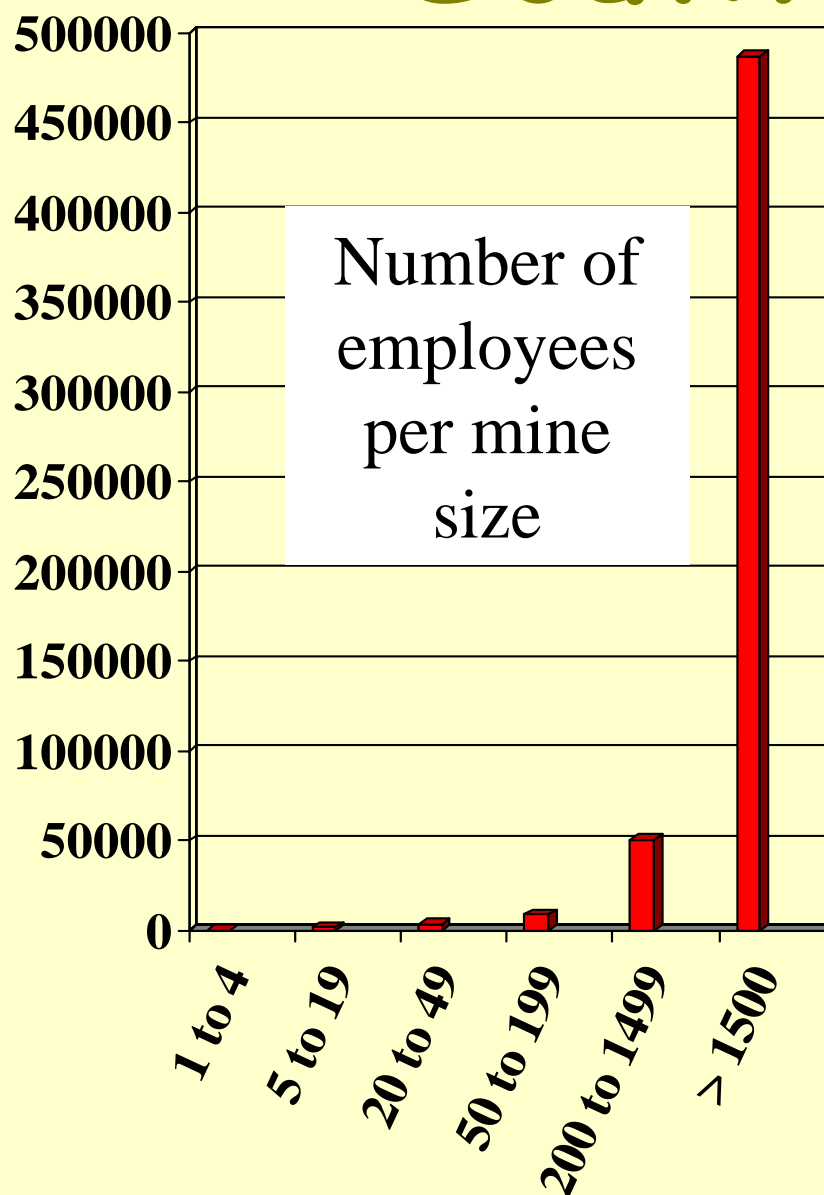
Main Minerals:

- ☀ **GOLD**
- ☀ **GEMSTONES**

Also mined:

- **Dimension Stones**
- **Diamonds**
- **Limestone**
- **Sand**
- **Gypsum**
- **Talc**

South Africa



Area:	1,219,912 km ²
Population :	43.5 mil.
GDP/head/y:	US\$ 3281
Mining Contribution:	8.0 %
Formal Mining Employment	1,350,000
SS-Miners:	10,000
• of these informal:	n.a.
• of these women:	5 %

South Africa



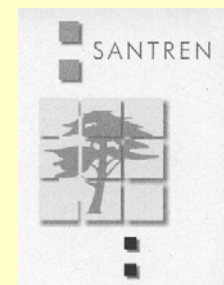
Main Minerals:

- ✳ **GOLD**
- ✳ **DIAMONDS**
- ✳ **GEMSTONES**

Also mined:

- **Coal**
- **Limestone**
- **Kaolin**
- **Gypsum**
- **Talc**

Zambia



Area:	752,610 km²
Population :	9.6 mil.
GDP/head/y:	US\$ 431
Mining Contribution:	12.1 %
Formal Mining	
Employment	300,000
SS-Miners:	30,000
• of these informal:	60%
• of these women:	30%

Zambia



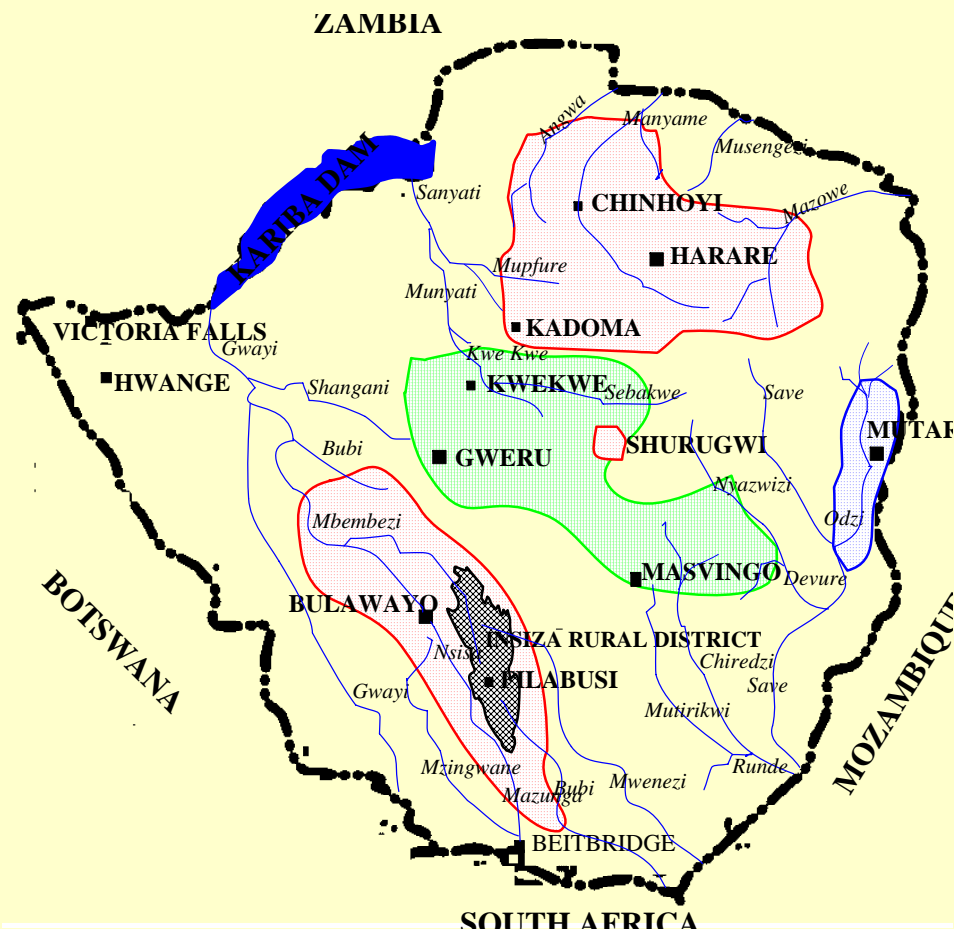
Main Minerals:

- ✪ GEMSTONES
- ✪ GOLD

Also mined:

- Cobalt
- Limestone
- Quartz
- Silver
- Gypsum
- Talc

Zimbabwe



Area:	390,580 km ²
Population :	11.4 mil.
GDP/head/y:	US\$ 579
Mining Contribution:	8.0 %
Formal Mining Employment	350,000
SS-Miners:	350,000
• of these informal:	85%
• of these women:	>50%

Zimbabwe



Main Minerals:

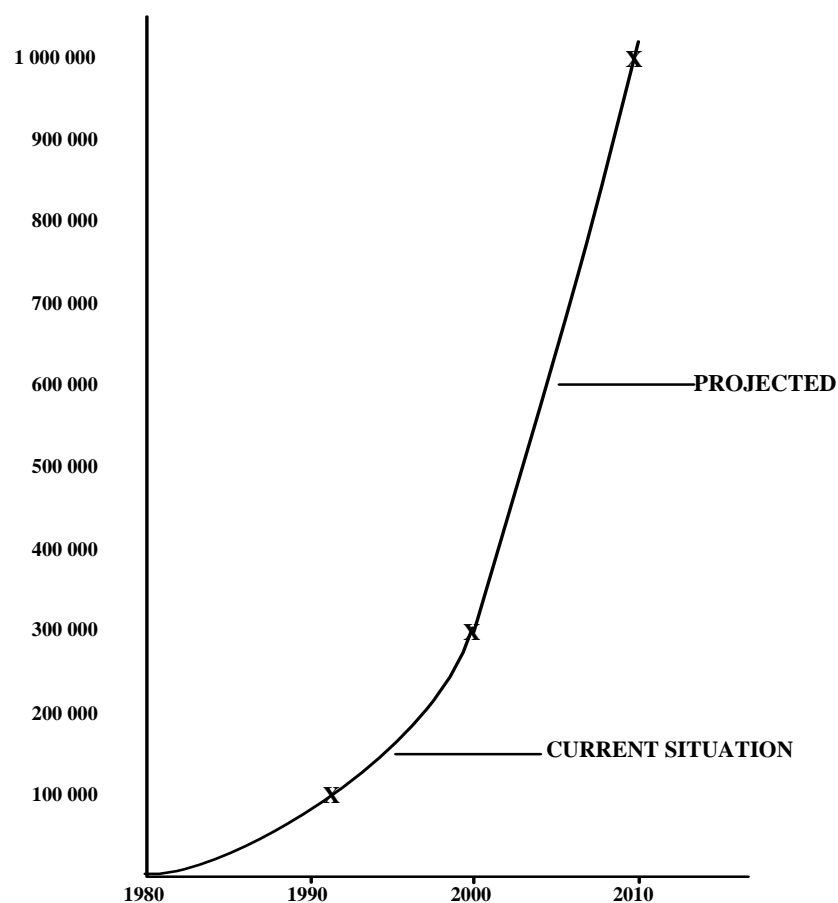
- ☀ **GOLD**
- ☀ **TANTALITE**
- ☀ **CHROME**
- ☀ **GEMSTONES**

Also mined:

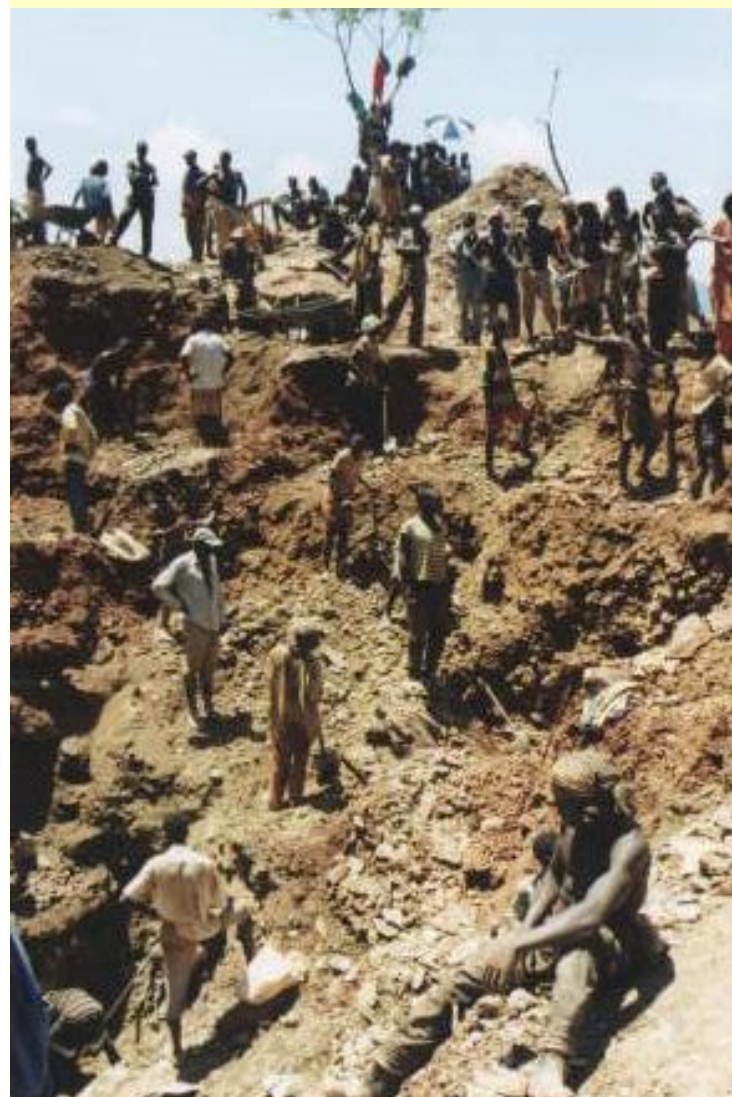
- **Quartz**
- **Limestone**
- **Graphite**
- **Gypsum**
- **Talc**

Numbers of People involved

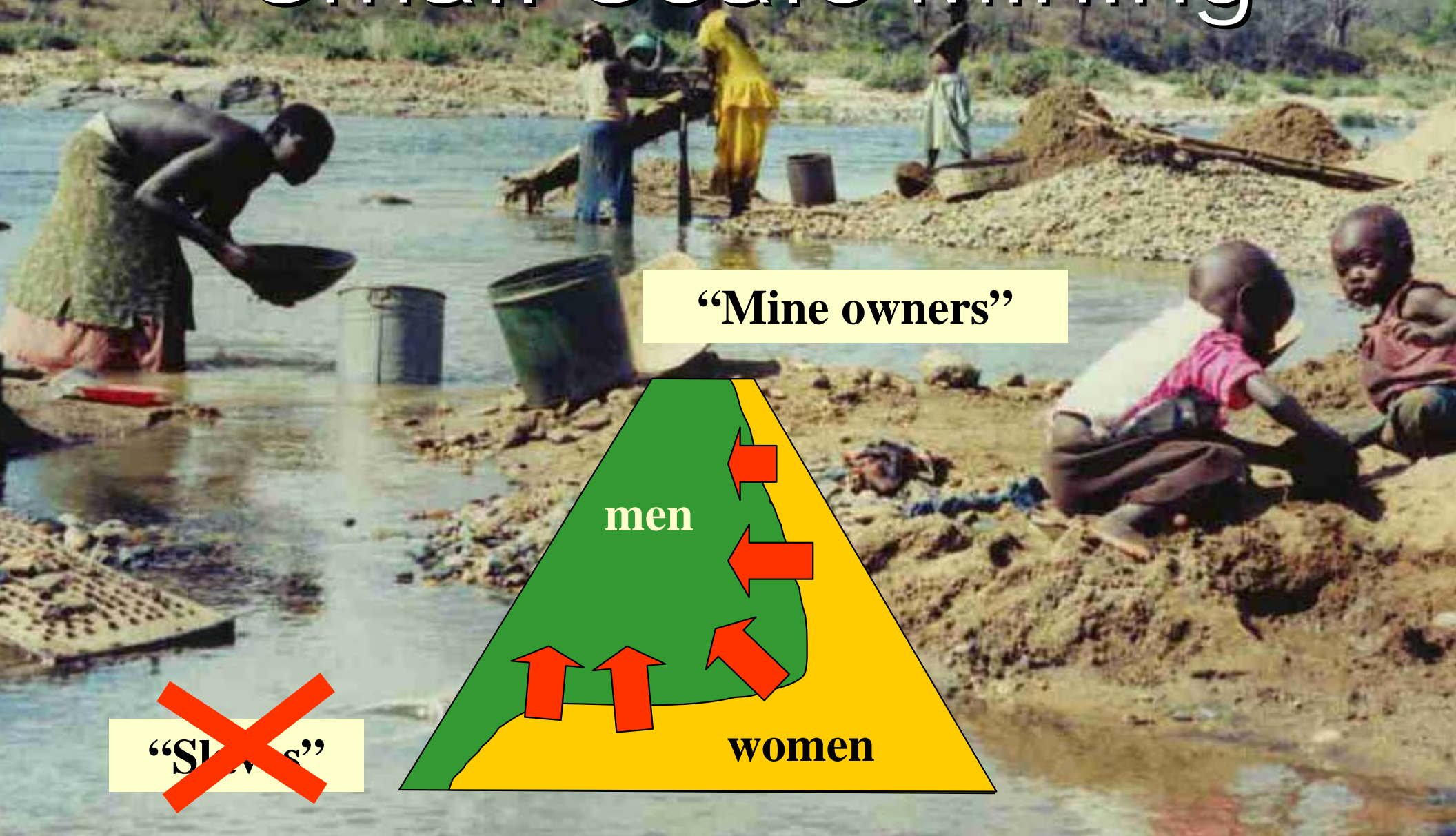
Figure 3.2: GROWTH OF SMALL SCALE MINING IN ZIMBABWE
(MMSD STUDY IN SADC REGION - ZIMBABWE)



Source: Sivotwa & Sibanda (2000)



Women in Small-Scale Mining



Women in Small-Scale Mining



or



Child Labor in Small-Scale Mining



It exists,



But no data

Life circle of an idea:

