

MMSD

mining minerals
and
sustainable development

Work Plan and Budget

hosted by
iied

Project Objective

“To identify how mining and minerals can best contribute to a global transition to sustainable development”

Project Development

The general project concept has been refined in increasing detail:

- * Scoping report (October 1999)
- * Project Strategy (March 2000)
- * Work Plan and Budget (June 2000)

Characteristics

The project is:

- * Decentralised
- * Heterogeneous
- * Inclusive
- * Responsible to many different actors

***Mining, Minerals and Sustainable Development
(MMSD)***

The project has four elements:

- * Research and analysis
- * Stakeholder engagement
- * Communication
- * Implementation

***These elements work together to
produce:***

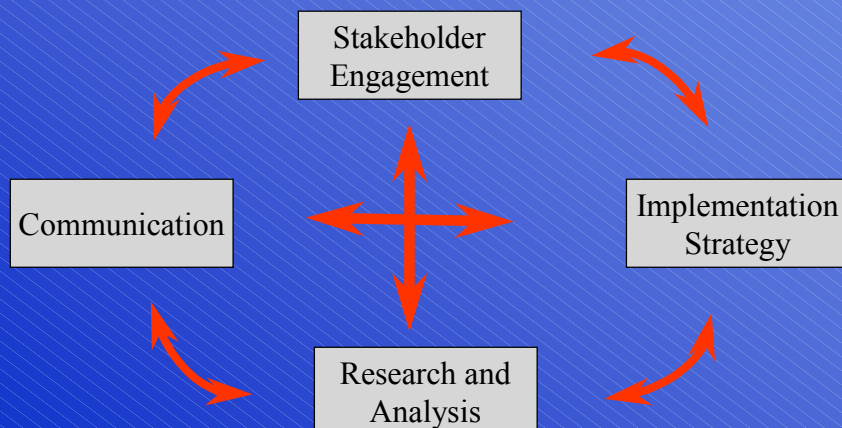
- * A clear agenda for change
- * On a foundation of careful analysis
- * Understood and supported by stakeholders
- * With a clear and accepted process for ongoing implementation

Engagement

The best studies by the best experts sometimes have little impact on dialogue. If we want to buy-in to the conclusions, then key stakeholders must be involved:

- * in defining the questions to be answered
- * in deciding how the answers are pursued
- * in deciding who needs to be involved

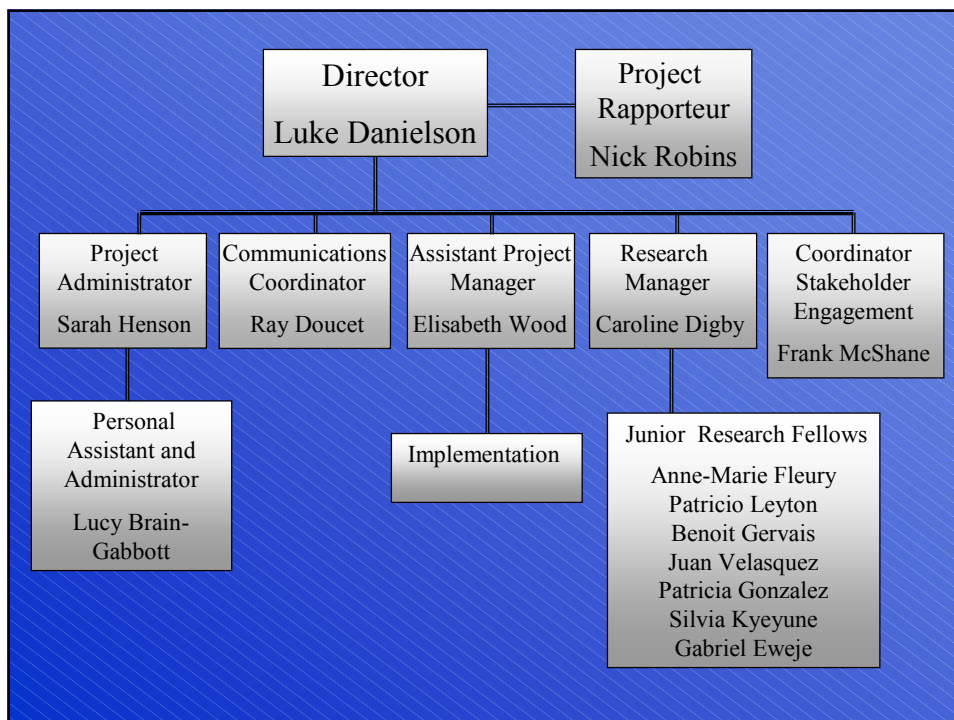
The project is a dynamic interaction among these components:

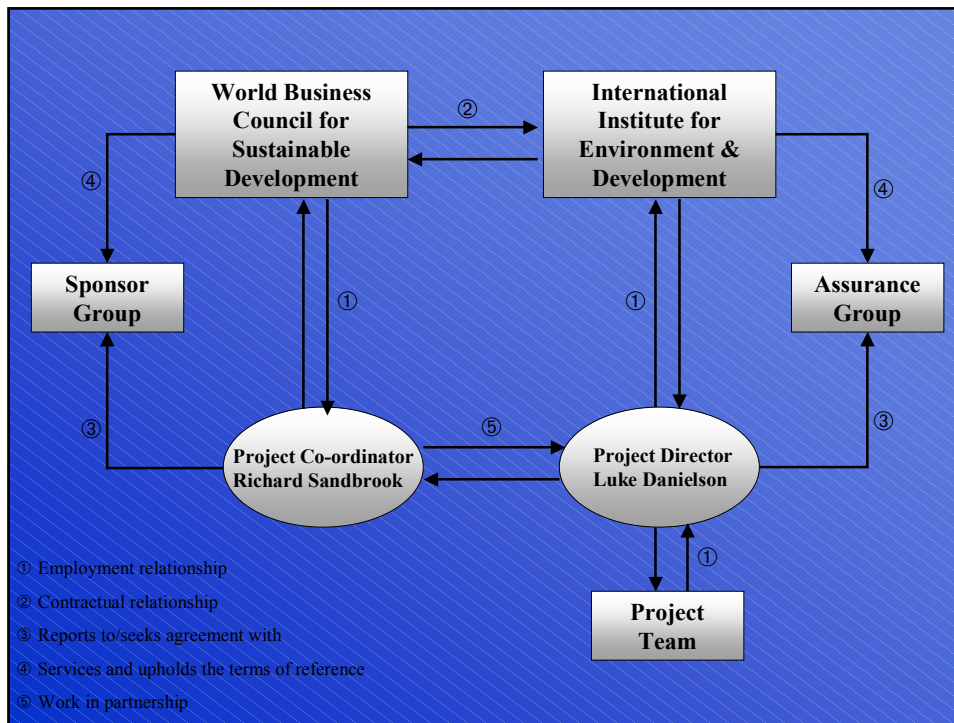


90 Day Status Report

The Project Coordinator, with IIED, developed the project plans and hired the Project Director. The Project Director & Assistant Project Manager started work 3 April. Since that date we have:

- *Developed a structure
- *Hired all key staff
- *Rented an office and got it running
- *Started project planning and stakeholder engagement
- *Formed the Assurance Group
- *Developed Work Plan and Budget





Decentralised Structures:

- * We cannot cover the whole world
- * *But* should establish a regional presence in 5-6 principal producing/consuming regions.
- * Regional boundaries should be largely self defined.

***Partner Institutions:
Characteristics***

- * Acceptable to all stakeholders
- * Credibility in sustainable development
- * Credibility in mining
- * Commitment to high quality work
- * On-going institutional existence
- * Highly desirable: regional partner has some kind of role in education/research

***Regional Research
a combination of:***

- * Research and analysis in support of priorities identified at the global level
- * Research and analysis in support of priorities identified at the regional level

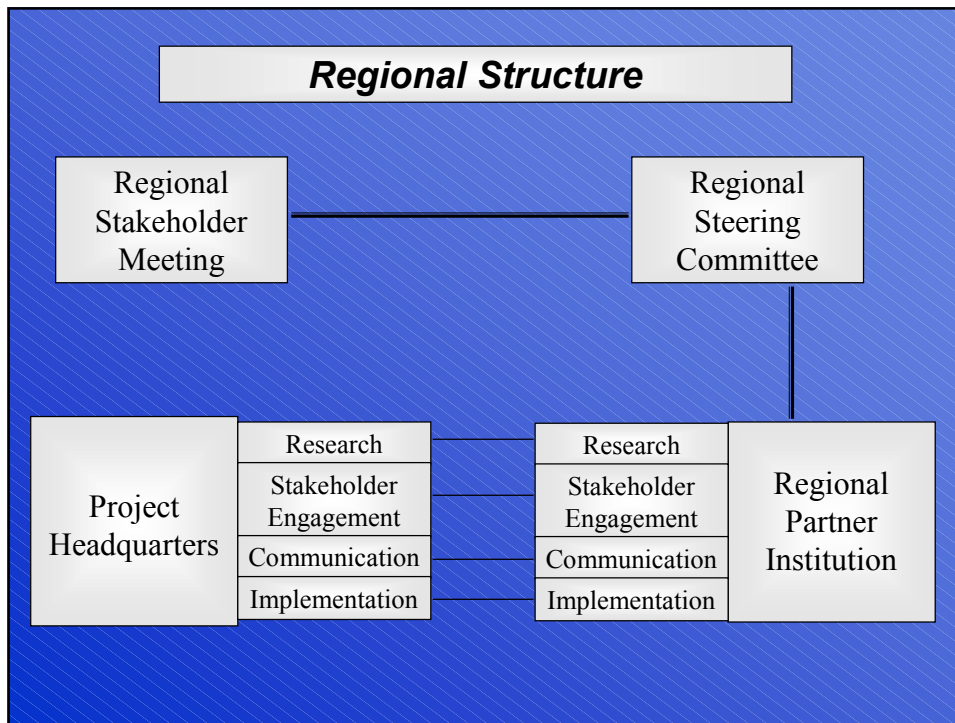
Regional Centres:

- * Start with seed funding from MMSD
- * Evolve to mixed funding
- * Ultimately (if stakeholders in region think useful) could become stand-alone institution
- * May not be one institution (consortium approach)

Functions of Regional Centres

Has a role in all four elements of the Project

- * Research and analysis (conducts and contracts)
- * Stakeholder engagement
- * Communication
- * Implementation



Products

- * Defined implementation process
- * Agreed principles for engagement
- * 3-4 global dialogues on key issues
- * Stronger regional research capabilities
- * Thorough survey of available information (possible series of CDs)
- * Interim reports

Next page

Products (continuation)

- * Report (may be a constellation of objects, not just a document)
- * Agenda for future research (global and regional)
- * Platforms for engagement at the regional level
- * Action agenda (global and regional)
- * Identify potential participants and topics for May 2002 meeting

Compile ideas



Systematise ideas



Filter ideas



Apply tools

Tools of Analysis

- * Research fellows
- * Contracted research
- * Regional research
- * Focus groups
- * Global dialogues

Budget

Has three elements:

- * Core costs
- * Sponsor pool
- * Restricted sponsors

High level of donor interest

Process

- * Solicit comment on Work Plan and Budget through August 7
- * Submit to Assurance Group August 28-29
- * Sponsorship Meeting in October 2000