

MMSD

mining minerals
and
sustainable development

Strategic Planning Workshop

hosted by
iied

Marriott Hotel, Hotel
London, 5-6 May 2000

Project Objective

**“To identify how mining and
minerals can best contribute to a
global transition to sustainable
development”**

Mining, Minerals and Sustainable Development (MMSD)

The project has four elements:

- * Research and analysis
- * Stakeholder engagement
- * Communication
- * Implementation

These elements work together to produce:

- * A clear agenda for change
- * On a foundation of careful analysis
- * Understood and supported by stakeholders
- * With a clear and accepted process for ongoing implementation

Research and Analysis

- * Potential areas of research are very broad
- * Key Challenge: to find issues where we can make a difference
- * Value: systematise what we know and don't know
- * Value: fill the gaps between the efforts of others

Stakeholder Engagement (1)

- * Consultation must occur at multiple levels
- * All participants must be comfortable with the process
- * Consultation will occur in multiple processes and multiple forms
- * But we will develop understood principles of engagement

Stakeholder Engagement (2)

- * Even the best research and analysis will not be accepted simply because it is performed by “experts”
- * Stakeholders have to help define the questions
- * And define who will answer them
- * And the methods employed

Relationship between research and stakeholder engagement

- * Must be highly interactive
- * Stakeholders can then ask more focussed questions
- * Stakeholders help set research priorities
- * Results from research should inform stakeholders

Communication (1)

- * We can't involve everyone individually in the Project.
- * Absence of information creates distrust
- * We need to communicate constantly
- * We need to listen, not just talk
- * We need to identify mechanisms (e.g. website, e-mail, bulletin)

Communication (2)

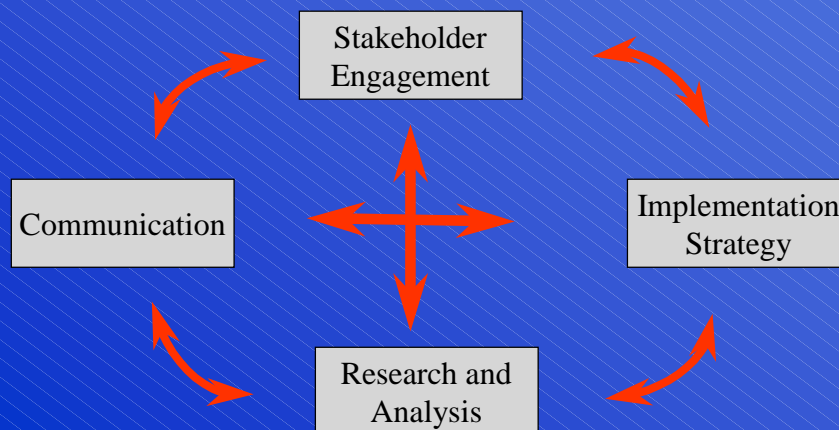
**The concept: a transparent process of
research, analysis and engagement
“research in a fishbowl”**

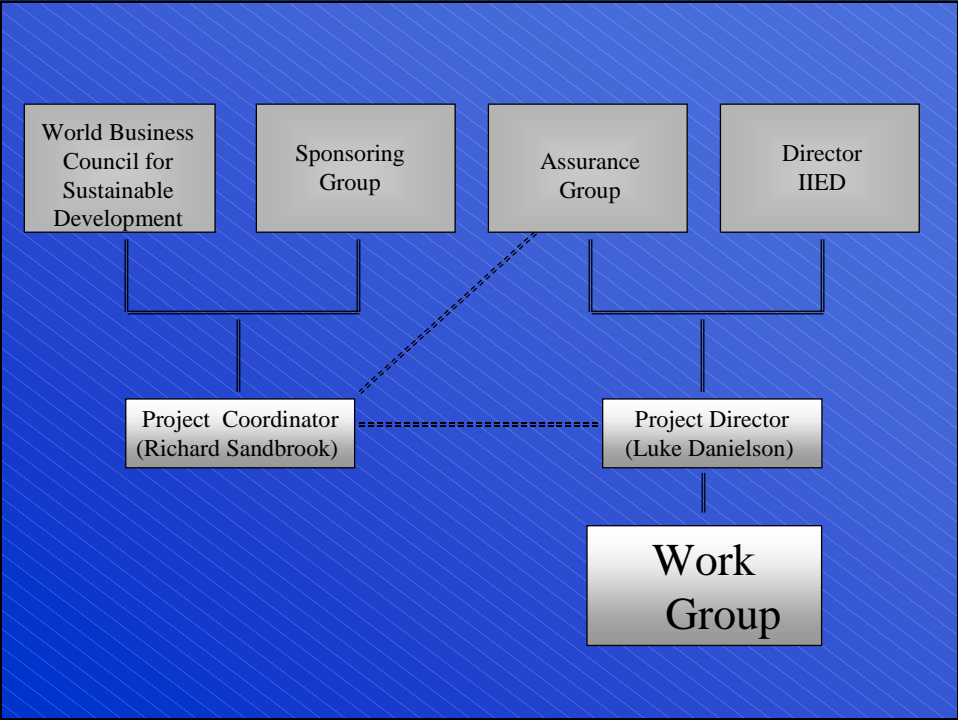
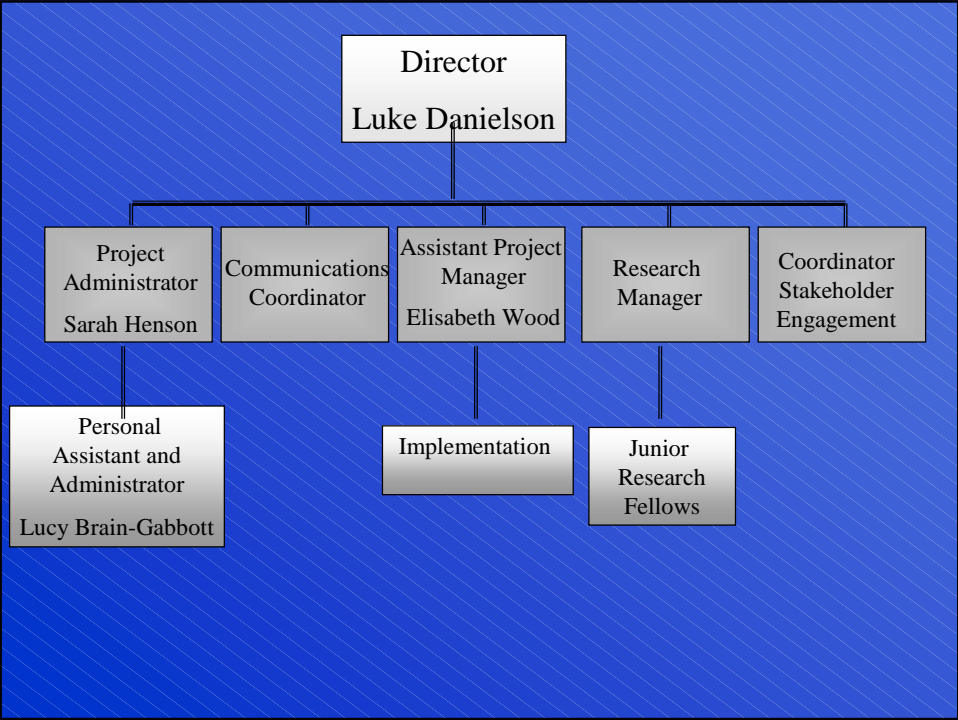
Implementation background

- * Research and dialogue processes have been tried before
- * Important conclusions have been reached but the long term impact is sometimes questionable
- * Implementation of the conclusions must be a consideration from the outset

(Detailed presentation later in the program)

**The project is a dynamic interaction
among these components:**





***The “Tool Box” of research, analysis
and engagement at the global level***

- * Junior research fellows
- * Contracted research (cash or sponsorship)
- * Research which Central Office requests from Regional Centres
- * “Focus Groups” or research committees
- * Multi-stakeholder dialogues on specific issues

Regional Structures:

- * We cannot cover the whole world
- * *But* should establish a regional presence in 5-6 principal producing/consuming regions.
- * Regional boundaries should be largely self defined.

Regional Structures: Steps

- * July 1-Sept.1 Identify regional partner
- * May be consortium
- * Oct-Feb. Hold regional stakeholder event
- * Identification of priority regional issues
- * Nov 1-March 1. Establish Regional Steering Committee

Regional Institutions: Characteristics

- * Acceptable to all stakeholders
- * Credibility in sustainable development
- * Credibility in mining
- * Commitment to high quality work
- * On-going institutional existence
- * Highly desirable: regional partner has some kind of role in education/research

***Regional Research
a combination of:***

- * Research and analysis in support of priorities identified at the global level
- * Research and analysis in support of priorities identified at the regional level

Regional Centres:

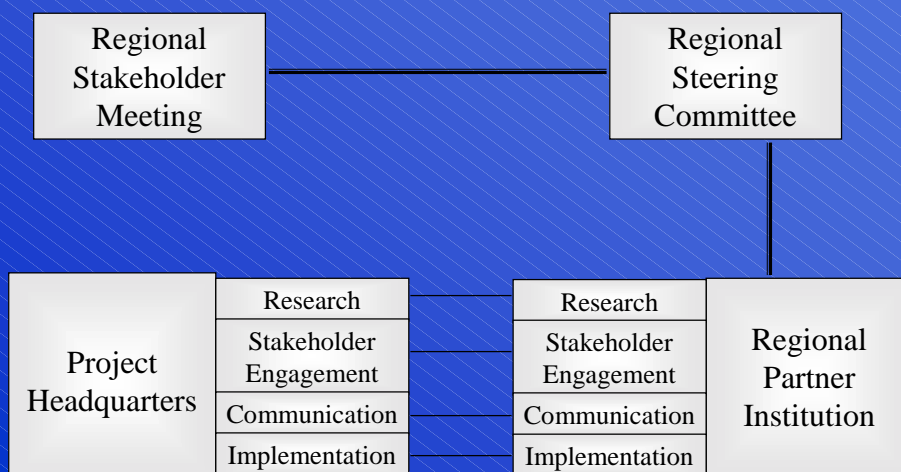
- * Start with seed funding from MMSD
- * Evolve to mixed funding
- * Ultimately (if shareholders in region think useful) could become stand-alone institution
- * May not be one institution (consortium approach)

Functions of Regional Centres

Has a role in all four elements of the Project

- *Research and analysis (conducts and contracts)
- *Stakeholder engagement
- *Communication
- *Implementation

Regional Structure



Global Level

- * Regional work needs to ‘bubble up’ *to* the global level
 - * *But* some specific issues needs to be dealt with at *global level*
- Example: free trade, access to markets, environmental concerns over use of metals.***
- * 3-4 key issues should be dealt with in depth by stakeholder dialogues at the global level

Products

- * Defined implementation process
- * Agreed principles for engagement
- * 3-4 global dialogues on key issues
- * Stronger regional research capabilities
- * Thorough survey of available information (possible series of CDs)

Next page

Products (continuation)

- * Report (may be a constellation of objects, not just a document)
- * Agenda for future research (global and regional)
- * Platforms for engagement at the regional level
- * Action agenda (global and regional)
- * Support for GMI project